



# UNDA NUMBERED COMPOUNDS:

## Patient Assessment, Evaluation and Practical Application

### *7-Session Webinar Series*

Presented by Dr. Dickson Thom, ND, DDS

Session 2: February 19, 2020

The audio portion of this webinar is available via VOIP or teleconference.

If you would like to access audio via teleconference, please dial:

- 1 (800) 806-5484 (toll free Canada/USA) or (416) 340-2217 (Toronto local number)
- Enter the Participant pass code 2540993#



# Achieve Sustained Treatment Outcomes



Thank you for attending this educational program.  
We are pleased to offer you the following promotion.

## 15% off all UNDA Numbered Compounds

Use promotional code:

**UNDA20**

\*Valid until June 8, 2020



To place an order, register for an education event or any additional questions,  
please call your Atrium Innovations representative at  
1 (800) 263-5861 Canada or 1 (888) 737-6925 USA.  
You can also visit [www.Seroyal.com](http://www.Seroyal.com) or [www.Seroyal.ca](http://www.Seroyal.ca)

\*Valid in Canada and USA. Offer expires 6/8/20 at 11:59 p.m. EST. Discount is valid on all UNDA Numbered Compounds. Free standard shipping will apply to the entire order. Cannot be combined with any other promotions or discounts or on previous orders, exclusions may apply. Promo code can be used four times. These products may not be right for everyone. Always read and follow the label.



# Speaker Disclosure

## Dr. Dickson Thom, ND, DDS



I am a paid advisor to Seroyal. I have no other conflicts of interest to disclose.

The Company assumes no liability for presenter's information, whether conveyed verbally or in these materials. All presentations represent the opinions of the presenter and do not represent the position or the opinion of the Company. Reference by the presenter to any specific product, process or service by trade name, trademark, or manufacturer does not constitute or imply endorsement or recommendation by the Company.

Seminars, teleconferences and webinars such as this are for educational purposes only and are intended for licensed health care practitioners.

Practitioners are solely responsible for the care and treatment provided to their own patients. These therapies are not substitutions for standard medical care. This presentation is intended for North American healthcare practitioners. U.S. healthcare practitioners, please note, product claims and dosing are in accordance with Health Canada regulations and have not been evaluated by the Food and Drug Administration (FDA). The information provided by speakers in this educational program, together with any written material, do not necessarily represent the view of Seroyal and are not intended as medical advice.

Homeopathy, Phytotherapy, Gemmotherapy, Oligo-elements and Schüssler Tissue Salts are modalities used in traditional medicine. Homeopathic uses are based on the Materia Medica and are not supported by clinical trials. These therapies are not substitutions for standard medical care.



# Drainage Biotherapeutics



Drainage covers the sum total of therapeutic means available to ensure elimination, through natural channels, of toxins vitiating the organism of a patient requiring treatment

**Drainage in homeopathy (Detoxification)**; Dr. E.A. Maury,  
translated from French by Mark Clement;  
CW Daniel Company Ltd, England, 1965



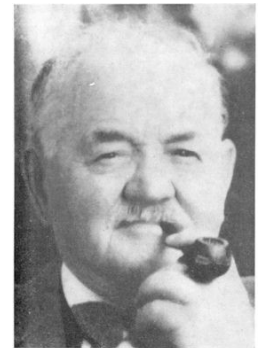
# Drainage Biotherapeutics



Drainage therapies evolved from the work of Leon Vannier (1880-1963) and Antoine Nebel (1870-1954), French homeopaths in the early 1900's



They utilized organotherapies as a development from isotherapy that was introduced by the German veterinarian Johan Joseph Wilhelm Lux (1776-1849)



Antoine NEBEL  
1870 1954

The Physician and Surgeon, A Professional Medical Journal, volume XXXII, 1910; page 50



# Drainage Biotherapeutics



Drainage therapies follow the law of similitude and the action of the infinitesimal dose.

The North American Journal of Homeopathy, published by The Journal Publishing Club (ltd) No 1748 Broadway, New York, Jan 1912, Third Series, Vol XXVII, page 187

From those beginnings has come the utilization of oligotherapy, lithotherapy, gemmotherapy, and combination remedies in concert with the well-established detoxification therapies. The addition of drainage remedies has proven clinically to enhance the effectiveness of other therapies and can be easily added to the present practice of any physician. Many classical homeopaths claim that the simillimum is its own draining remedy. There is no contradiction between drainage and Hahnemanian homeopathy. One prepares the way for the other.

Organotherapy, Drainage and Detoxification;  
Dr. Joe Rozenchwajg, MD, PhD; Natura Medica Ltd, 2008



# Biotherapeutics



- **Elementary remedies:** air, water, light, electricity, magnetism, etc.
- **Biochemical remedies:** food, botanicals, enzymes, vitamins, minerals, chelation, etc.
- **Mechanical remedies:** exercise, structural integration, body work, massage, colonics, hydrotherapy, etc.
- **Energetic:** homeopathy, acupuncture, flower remedies, therapeutic touch, gemmotherapy, tissue salts, oligotherapy, etc.
- **Mental and spiritual:** positive thinking, prayer, meditation, etc.



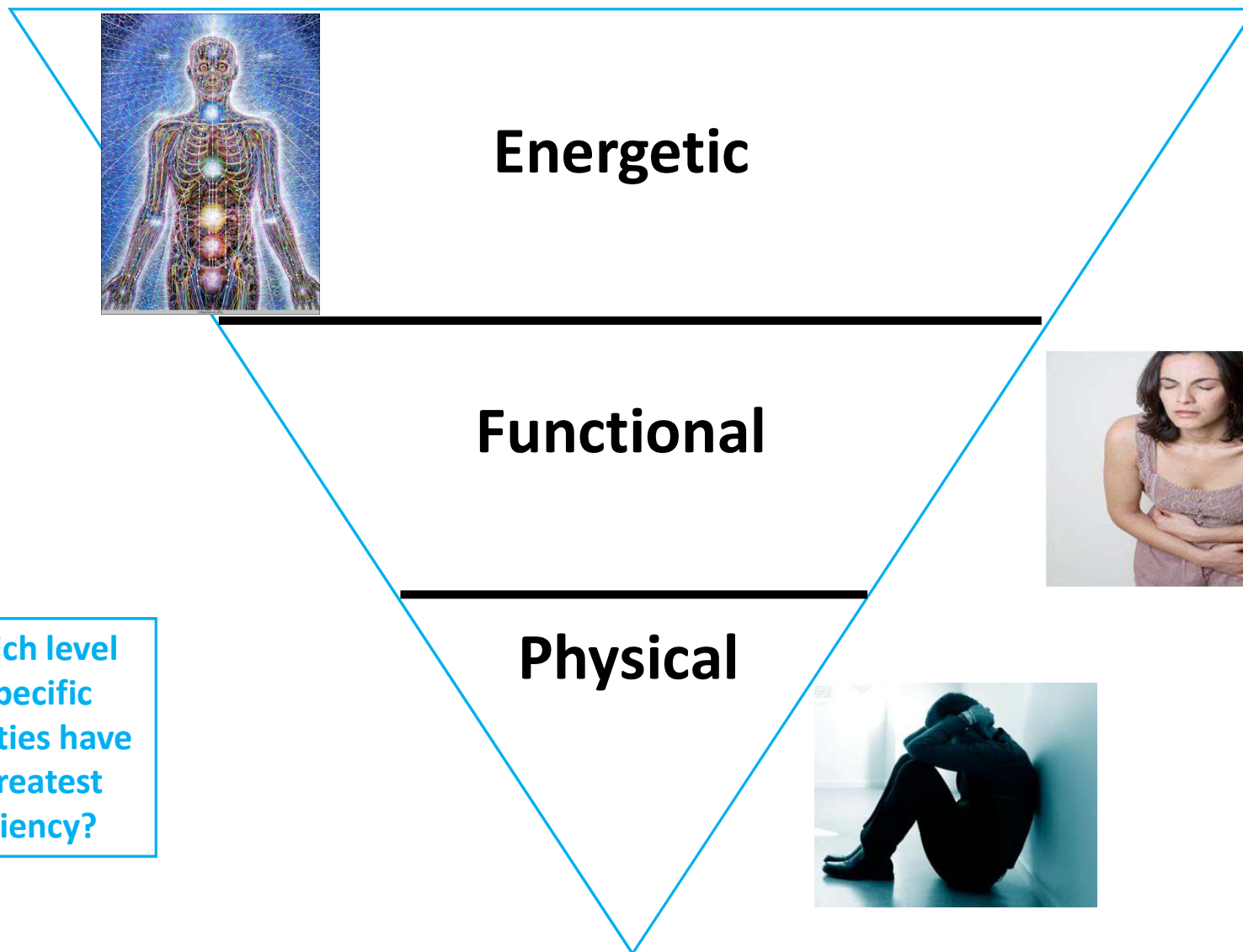
# Drainage Biotherapeutics



**WHERE  
DO THEY ACT?**

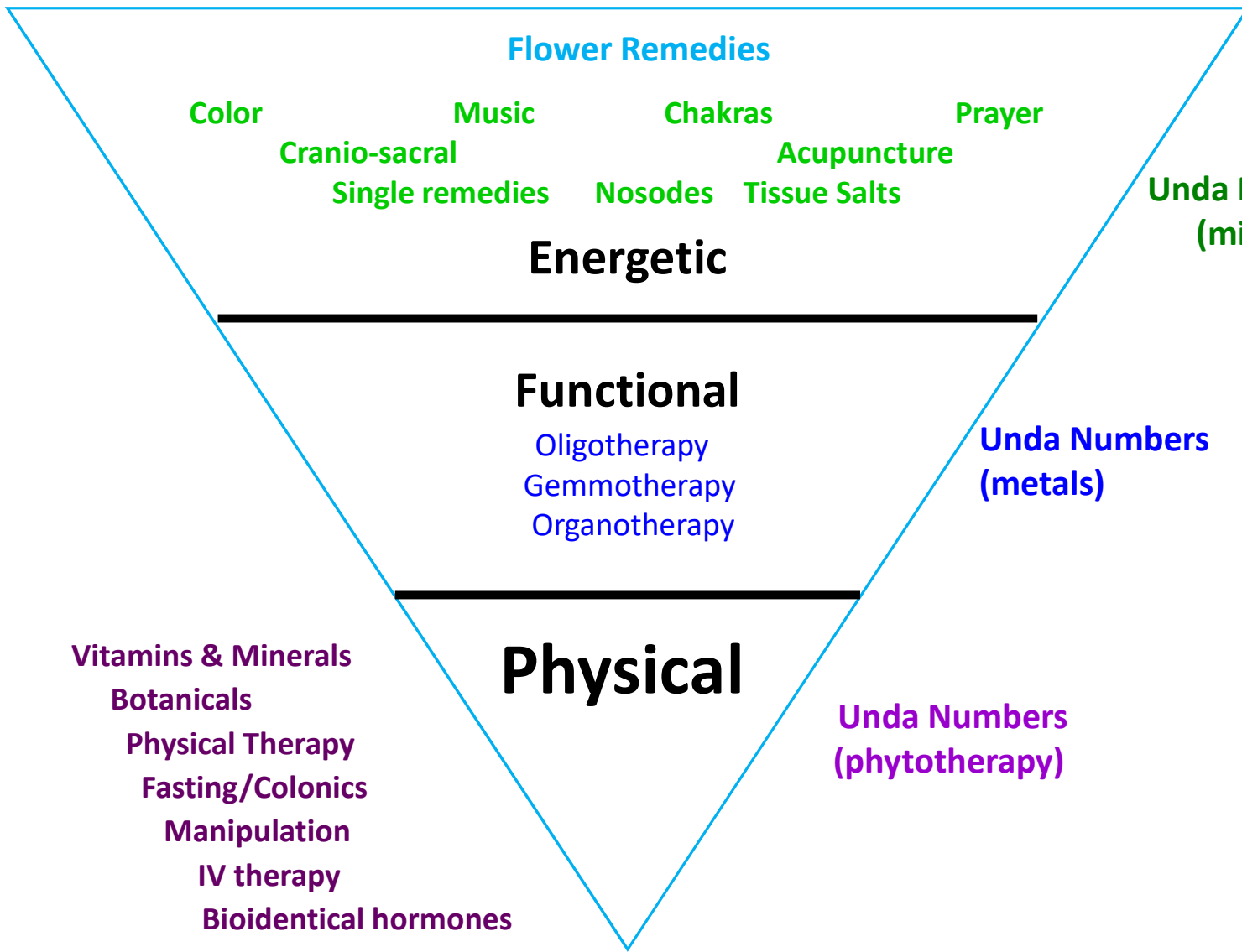






At which level  
do specific  
modalities have  
the greatest  
efficiency?





# Why UNDA?



Located in Brussels and Harze, Belgium, UNDA is the largest homeopathic brand in Belgium.

UNDA is world renown for the quality and effectiveness of their products.

The word UNDA means undulating water.



UNDA products are formulated using a combination of GMO-free plant, mineral, and organic raw materials obtained primarily from local sources.

Products are thoroughly tested to verify that they are free of microbes, mycotoxins, pesticides, heavy metals and other contaminants.

UNDA incorporates meticulous laboratory analysis and rigorous quality testing to confirm that the appropriate concentrations of ingredients are present in its products.



# Why UNDA? (continued)



## Unda utilizes meticulous and distinctive Laboratory Analysis of remedies:

**Column Chromatography** - Plants are identified by botanists, and specific related details are logged and retained on computer for future reference

- Chromatography uses 4 curves of light (yellow, blue, red, black). Each product absorbs light differently so it can be uniquely identified. Each has its own fingerprint. Every year mother tinctures are analyzed to ensure that they are stable

**Infrared Spectrometry** - Analyzes inorganic and organic chemicals

- Organic compounds are ground up and put in a gel. The analysis involves the compound migrating up the plate under a field of electricity

**Fluorometry** – Determines final products in solution

- The substance is placed in a device that produces two curves – an excitation curve and an emitting curve
- This device provides a computer graph of the energy of the product. This graph is used to determine if the remedies are consistent from batch to batch





# UNDA NUMBERED COMPOUNDS



# UNDA Numbered Compounds



Unique remedies synergistically formulated with **plant constituents** that target and carry **potentized metals** to specific organs where enzymatic and metabolic functions are carried out on a cellular level, helping to facilitate the **drainage of toxins**

Facilitate the drainage of toxins on **extra-cellular and intra-cellular levels**, supporting **individual organ systems**

The only complex remedies of their type, formulated with both plants and metals, acting on **organotropic and energetic sensitivity levels**, respectively

**Each Unda Numbered Compound has its own fingerprint** and is combined synergistically based on the integrated principles and theories of oligotherapy, anthroposophy, botany, Traditional Chinese Medicine and homeopathy

UNDA Numbered Compounds are fundamental in Biotherapeutic Drainage®, as they work on a physiological and “terrain” level.



# UNDA Numbers



Each remedy is an integration  
of vast knowledge from  
Anthroposophical Literature  
Miasmatic Theory  
Oligotherapy  
Chinese Medicine and  
Homeopathy



# UNDA Numbers



Integration of **PLANTS (4x-6x)**,  
**Pure METALS 12x**  
and **ALCOHOL**

(as a way to circulate the chi and blood)



+



+

**ALCOHOL**





# UNDA Numbers



**PLANTS** are **organotropic**,  
carrying the **pure METALS**  
to the appropriate site

They form a unique energetic complex,  
different from any other single remedy



# Metals in the UNDA Numbers



## AURUM/ GOLD

- Has a role in all functions, organs, terrains
- Supports cells, cell nucleus
- Important in RNA/ DNA processes



## CUPRUM/ COPPER:

- Supports the hematopoietic system - part of hemoglobin
- Helps regulate hepatic function
- Aids production of antibodies, and resistance to infection, some viruses



# Metals in the UNDA Numbers



## ARGENTUM/ SILVER:

- Has anti-infectious properties



## ALUMINUM:

- Supports the nervous system
- Helps in situations of sluggish intellectual processes and cerebral atony



# Metals in the UNDA Numbers



## PLUMBUM/ LEAD:

- Helps with supporting degenerative health
- Helps with profound cellular intoxication



## STANNUM/ TIN/ PEWTER:

- Supports respiratory health



## ANTIMONIUM/ ANTIMONY:

- Supports respiratory health and proper bronchial secretions



# UNDA Numbers – Therapeutic Action



1. Optimize function of natural emunctories
2. Move free toxins towards the natural emunctories
3. Normalize function of the glandular systems
4. By repetition, detoxify organs and recharge the enzyme systems
5. Cause profound modification of the “terrain”



# 5 Stages of Drainage



## Cellular Stage:

- Intracellular toxins must be removed from the cell and its immediate surroundings
- Considerations to facilitate this stage are [UNDA 1](#) and [UNDA 18](#) (#1 for a benign process - functional concern, and #18 when there is a more advanced state such as a degenerative process that arises during a lesional situation)



## Hepatic Stage:

- The liver filters and metabolizes toxins eliminated by the cells and passed into the bloodstream
- A consideration to encourage this stage is [UNDA 20](#)



# 5 Stages of Drainage



## Renal and Pulmonary Stage:

- The totally catabolized acidic toxins are eliminated by the kidney or lung
- Considerations to encourage this stage are [UNDA 2](#) and [UNDA 5](#)



## Secondary Catabolic Stage:

- In the presence of chemical or dietary toxins, the body may produce a toxic intermediate metabolite from catabolic degradation and require an additional degradation or secondary catabolism. In addition, many chemicals such as some prescription medications, pesticides, and heavy metals may be incompletely catabolized
- Toxins can only be eliminated by the emunctories after they have been completely catabolized. Hence, the consideration of [UNDA 258](#) for joint-health related concerns, [UNDA 48](#) for degenerative situations, or [UNDA 15](#) for feverish conditions can encourage healthy catabolism and eventual excretion of the toxins



# 5 Stages of Drainage



## Emunctory Stage:

- Once the toxins have been degraded enough to be eliminated, they are carried to primary emunctories or to mucous membranes that are capable of serving as secondary emunctories (urinary tract, intestinal, pulmonary, genital or cutaneous)
- Considerations in managing these functions are [UNDA 7](#), [50](#), [27](#), [245](#), and [270](#)





# Dosing UNDA Numbers



UNDA Numbers are generally administered for sublingual absorption

Adults & Children 12 years and older:

## General Dosing

- 10 to 30 drops – one to three times daily

## Acute Dosing:

- Follow the general dosing drop amount and take every 15 to 60 minutes (up to 12 times per day), or until symptoms improve; then resume General Dosing



# Dosing UNDA Numbers



## Children – 6 to 11 years old:

### General Dosing

- 5 to 15 drops one to three times daily

### Acute Dosing:

- Follow the general dosing drop amount and take every 15 to 60 minutes (up to 12 times per day), or until symptoms improve; then resume General Dosing

## Children – 1 to 5 years old:

### General Dosing

- 5 to 10 drops (one to three times daily)

### Acute Dosing:

- Follow the general dosing drop amount and take every 15 to 60 minutes (up to 12 times per day), or until symptoms improve; then resume General Dosing



# Dosing UNDA Numbers



Infants – birth to 11 months old:

## General Dosing

- 1 to 5 drops one to three times daily

## Acute Dosing:

- Follow the general dosing drop amount and take every 15 to 60 minutes (up to 12 times per day), or until symptoms improve; then resume General Dosing



# UNDA Numbers



76 Numbers, # from 1 – 1002

UNDA 1 - 13

UNDA 14, 15, 16

UNDA 17 - 50

UNDA 74 - 1002

ORGANS

DEGENERATIVE

FUNCTIONAL

DRAINAGE



# UNDA Numbers



UNDA 1 - 13

METALS

UNDA 14, 15, 16

METALS

UNDA 17 – 50 (except 23)

METALS

UNDA 74 – 1002 (except 202, 700,710) NO METALS



# Individual Organ Systems

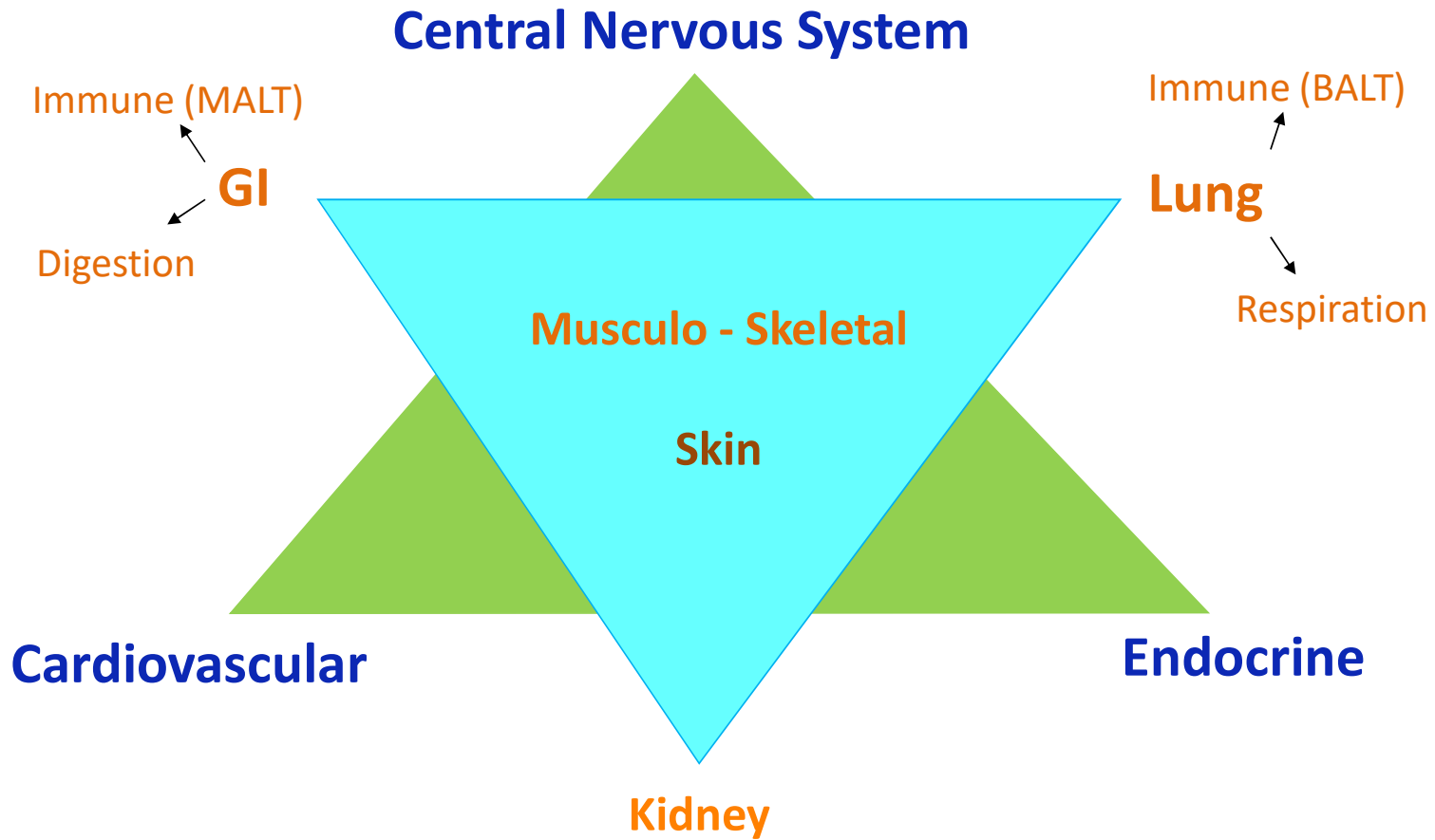


Biotherapeutic Drainage® using UNDA Numbered Compounds works on both extracellular and intracellular levels to remove blockages (toxin accumulations, mental or emotional blocks)

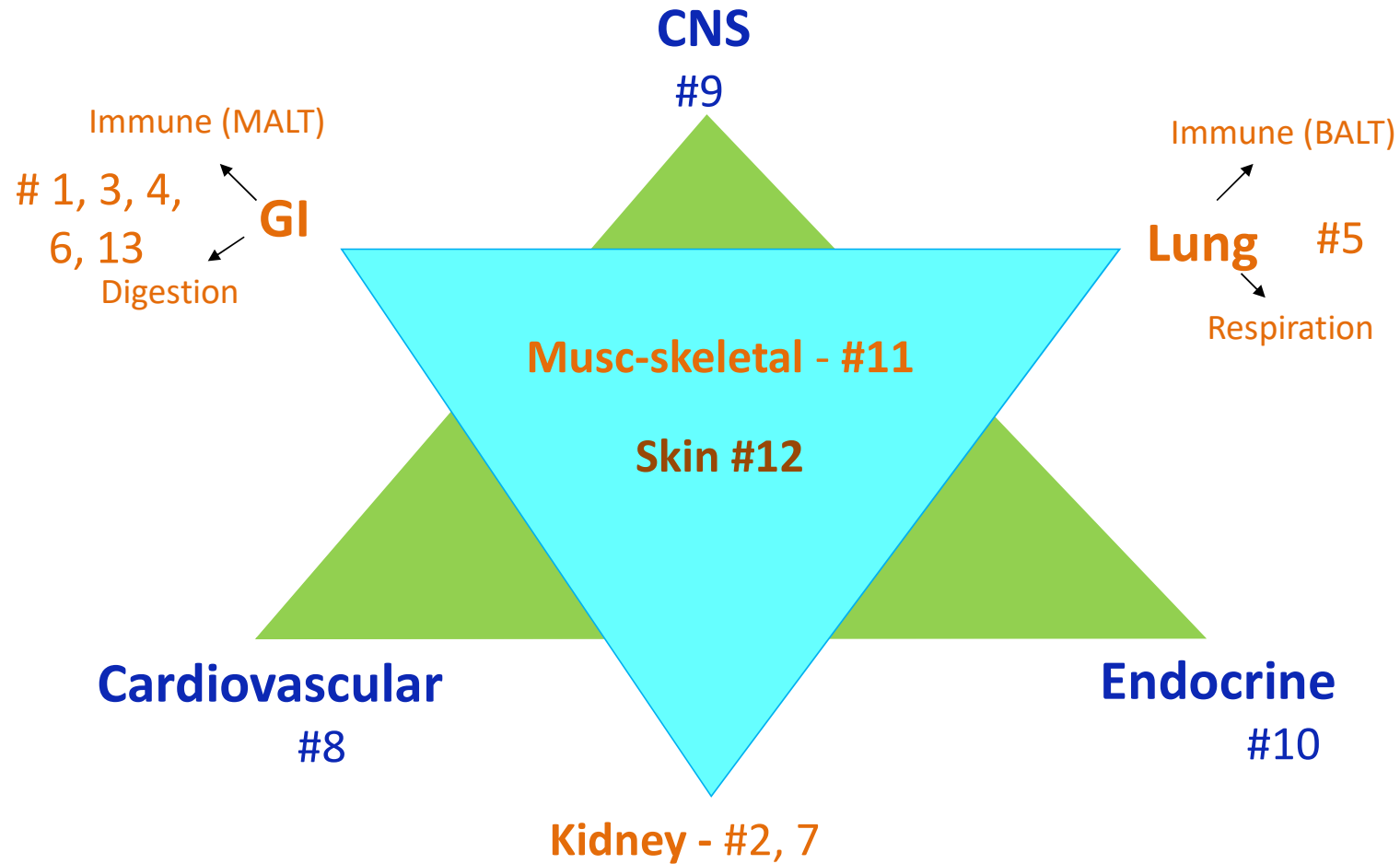
This helps to support physiological functions of the individual organ systems, encouraging the body towards a state of equilibrium and self-regulation



# All Systems Are Inter-related

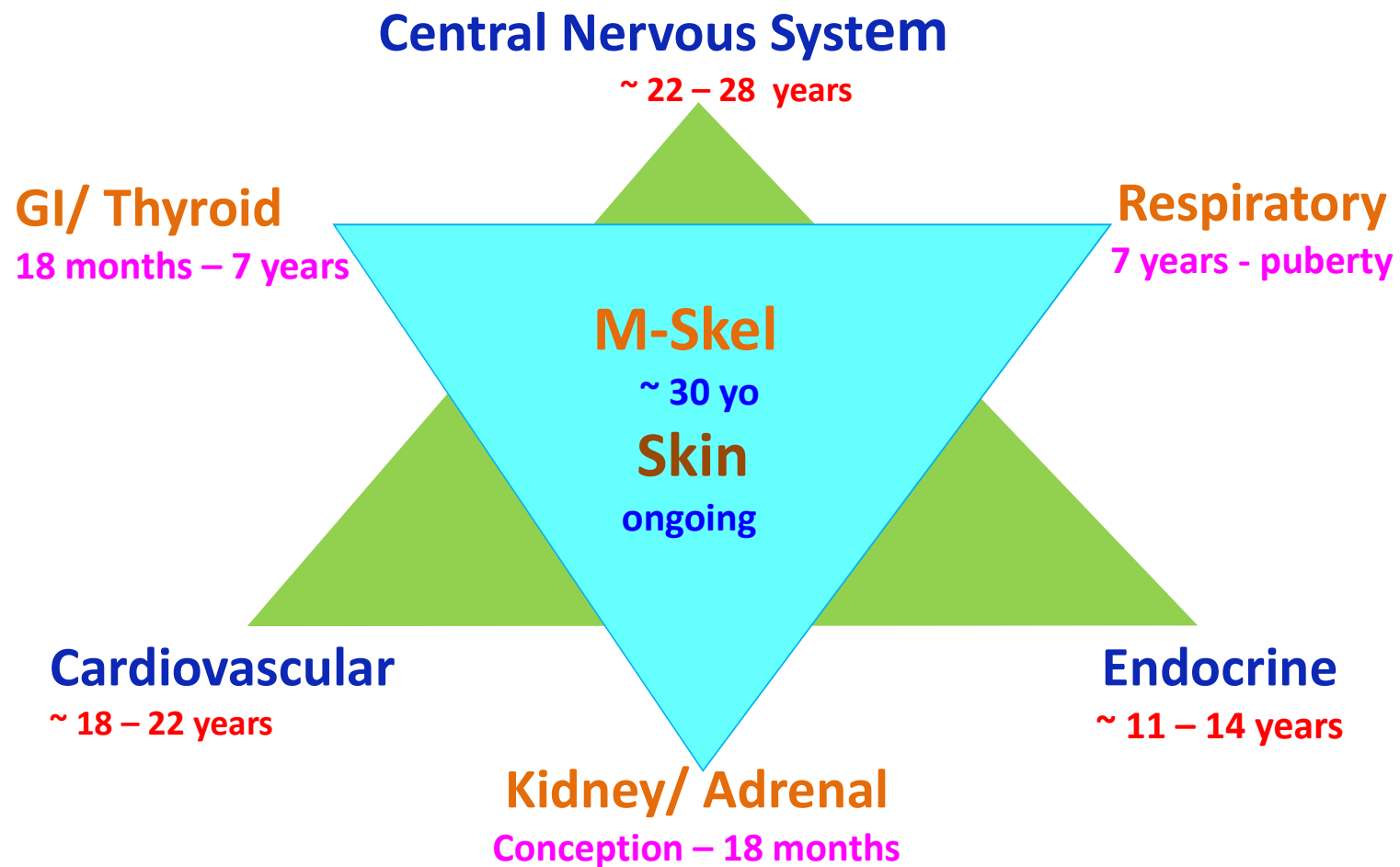


# Unda Numbers For The Organ Systems





# Maturation Ages Of The Organ Systems





# DRAINAGE: Key Remedies

\* not 1<sup>st</sup> visit

SYSTEMIC COMPLEXES	FUNCTIONAL COMPLEXES	DRAINAGE COMPLEXES
UNDA 1 Gastrointestinal, Hepatic and Renal systems Hepatic and Renal Health)	UNDA 17 Cutaneous and Digestive Systems (Skin and GI Health)	UNDA 220 Respiratory System (Lung Health)
UNDA 2 Urinary System (Kidney Health)	UNDA 20 Digestive System (Cellular Health)	UNDA 226 Digestive System (Digestive Health)
UNDA 11* Musculoskeletal System (Joint Health)	UNDA 40 Digestive System	UNDA 243 Digestive and Endocrine Systems (Liver Health)
UNDA 12* Cutaneous System (Skin Health)	UNDA 48 Cardiovascular, Endocrine, Respiratory and Urinary Systems (Cellular Health)	UNDA 258 Digestive and Urinary Systems (Kidney and Catabolic Health)
UNDA 13 Hepato-Digestive System (Liver/Gallbladder Health)	UNDA 50 Digestive System (Colonic Health)	

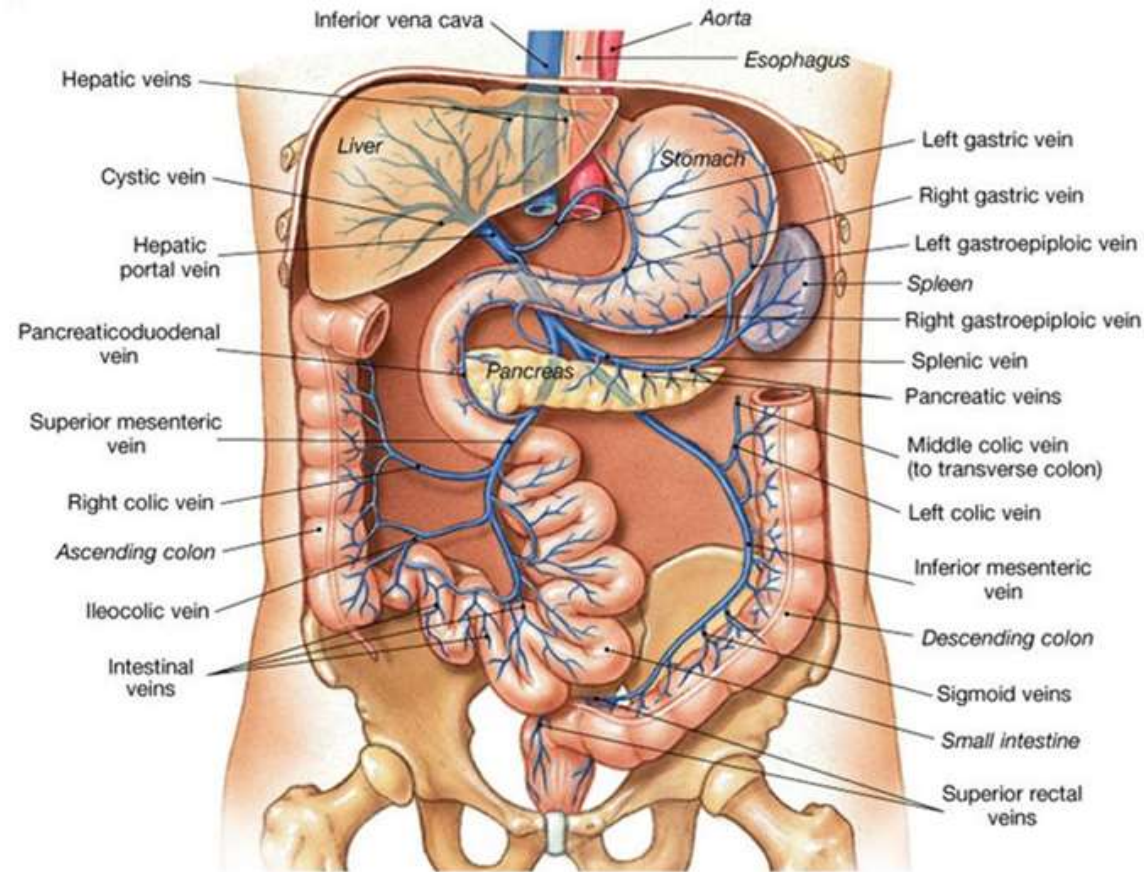




# Digestive, Hepatic & Hepato-Digestive Systems



# Hepatic System



# Hepatic System Overview



- The primary responsibilities of the hepatic system include processing and storing nutrients in the body as well as cleansing and detoxifying the blood
- This complete system includes not only the liver and gallbladder, but is also associated with the hepatic portal system
- The hepatic portal system comprises of a series of veins that transport blood from the gastrointestinal tract (stomach, intestine, pancreas and spleen and gallbladder) to the liver. This activity supports the processing of nutrients and the detoxification of the blood before it re-enters the blood stream back to the heart



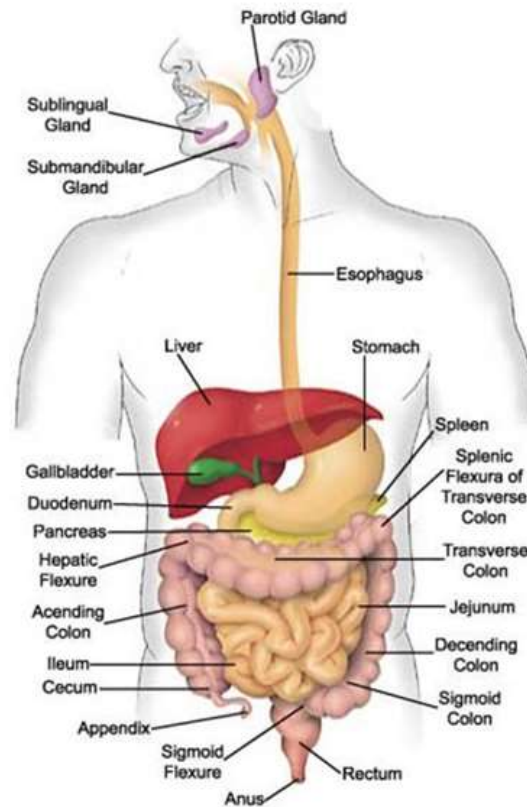
# Digestive System Overview



- The digestive system is a key segment of the gastro-intestinal tract, and is responsible for ingestion, secretion, mixing and propulsion, digestion, absorption and defecation
- Essentially, taking everything that we consume, processing it, absorbing nutrients, and finally expelling waste. This impacts our general health and wellbeing
- Our Enteric Nervous System (ENS) resides in the lining of our gastrointestinal tract and is referred to as our “second brain”. Hence the health of our digestive system impacts our health on numerous levels



# Hepato-Digestive System



This system incorporates liver and digestive function and health





SYSTEMIC COMPLEXES	FUNCTIONAL COMPLEXES	DRAINAGE COMPLEXES
<p>UNDA 1 Gastrointestinal, Hepatic and Renal Systems (Liver and Gallbladder Health)</p>	<p>UNDA 20 Digestive System (Support for Digestion)</p>	<p>UNDA 74 Digestive, Cardiovascular and Endocrine Systems (Portal System Health)</p>
<p>UNDA 13 Hepato-Digestive System (Pancreas, Liver and Small Intestine Health)</p>		<p>UNDA 226 Digestive System (Digestive Health)</p>
		<p>UNDA 243 Digestive and Endocrine Systems (Support for Digestion)</p>
		<p>UNDA 258 Digestive and Urinary Systems (Kidney and Catabolic Health)</p>

# DIGESTIVE: Hepatic & Hepato- Digestive Systems





# UNDA 1

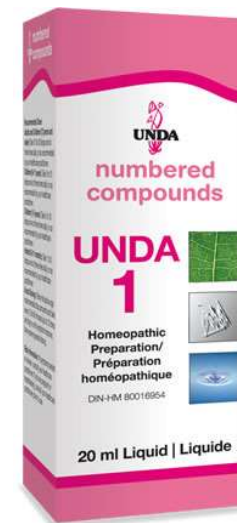


## Hepatic System Application

**Organ System Applications:**  
Gastrointestinal, Hepatic, Renal

**Applications:**

- Support for hepatic health and function
- Temporary relief of symptoms associated with indigestion, fatigue following meals and occasional headaches:
  - Indigestion
  - Abdominal pain
  - Headache
  - Fatigue
  - Belching



**FORMULA**

Millefolium	4x
Angelica archangelica	4x
Uva-ursi	4x
Equisetum arvense	4x
Lycopodium clavatum	4x
Terebinthina laricina	5x
Valeriana officinalis	4x
Argentum metallicum	12x



# UNDA 13



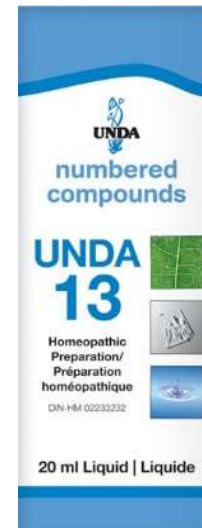
## Hepato-Digestive System Application

### Organ System Applications:

Hepato-Digestive

### Applications:

- Support for hepatic and digestive health
- Temporary relief of symptoms associated with digestive upset:
  - Abdominal pain
  - Constipation
  - Food overindulgence - Indigestion
  - Abdominal cramps

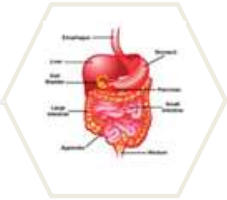


### FORMULA

Combretum raimbaultii	4x
Jateorhiza palmata	4x
Boldo	4x
Ricinus communis	4x
Argentum metallicum	12x



# UNDA 20

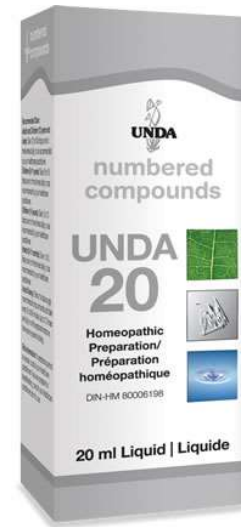


## Digestive System Application

### Organ System Applications: Digestive

#### Applications:

- Support for digestive health and function
- Temporary relief of symptoms associated with digestive upset:
  - Heartburn
  - Indigestion
  - Nausea
  - Abdominal pain and discomfort
  - Stomach pain
  - Constipation

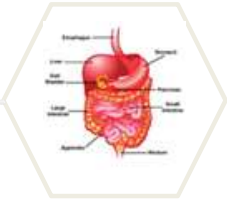


#### FORMULA

Calendula officinalis	4x
Condurango marsdenia	4x
Jacaranda caroba	4x
Sabina	4x
Robinia pseudoacacia	4x
Aluminum metallicum	12x
Argentum metallicum	12x
Arsenicum album	12x
Aurum metallicum	12x



# UNDA 74



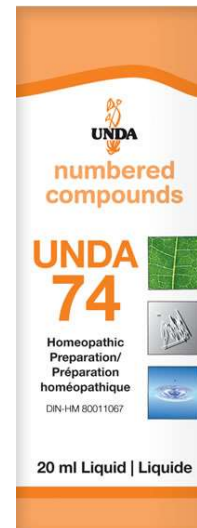
## Digestive System Application

### Organ System Applications:

Cardiovascular, Digestive, Endocrine

### Applications:

- For the temporary relief of symptoms associated with mild digestive distress:
  - Constipation
  - Bloating
  - Stomach cramps
  - Stomach acidity

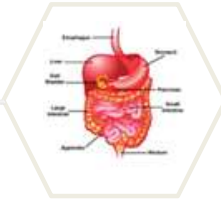


### FORMULA

Cynara scolymus	4x
Hamamelis virginiana	4x
Lycopodium clavatum	6x
Boldo	6x
Sepia	6x



# UNDA 226

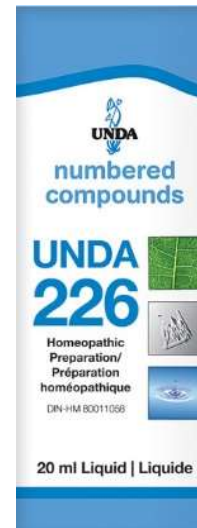


## Digestive System Application

### Organ System Applications: Digestive

#### Applications:

- For the temporary relief of symptoms associated with poor digestion and lack of appetite:
  - Bloating
  - Stomach pain
  - Constipation
  - Loss of appetite
  - Nausea

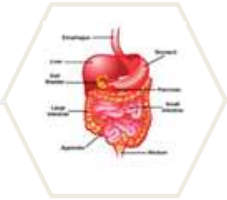


#### FORMULA

Aloe ferox	6x
Berberis vulgaris	6x
Chelidonium majus	6x
Juniperus communis	6x
Boldo	6x
Urtica dioica	6x



# UNDA 243



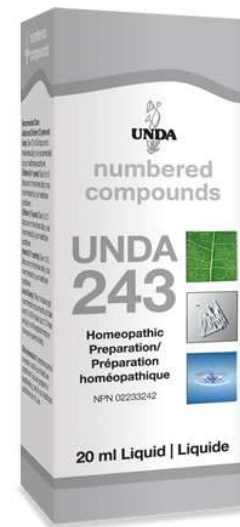
## Digestive System Application

### Organ System Applications:

Digestive, Endocrine

### Applications:

- Support for digestive, hepatic and endocrine health
- For the temporary relief of symptoms associated with overindulgence in food and alcohol:
  - Atonic stomach
  - Abdominal pain
  - Food overindulgence
  - Stomach ache
  - Headache

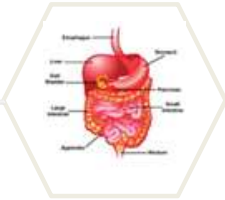


### FORMULA

Combretum raimbaultii	4x
Lycopodium clavatum	4x
Boldo	4x
Podophyllum peltatum	4x
Cholesterinum	12x



# UNDA 258



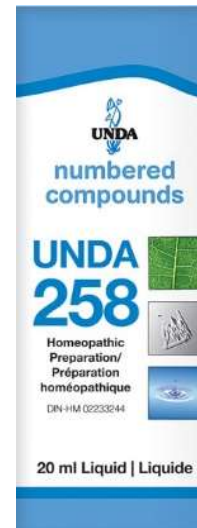
## Digestive System Application

### Organ System Applications:

Digestive, Urinary

### Applications:

- For the temporary relief of symptoms associated with poor digestion and minor urinary discomfort:
  - Stomach pain
  - Constipation
  - Poor digestion
  - Flatulence
  - Frequent urination
  - Painful urination



### FORMULA

Berberis vulgaris	4x
Bryonia dioica	4x
Hydrastis canadensis	4x
Lycopodium clavatum	4x
Mercurialis annua	4x
Boldo	4x
Solidago virgaurea	4x



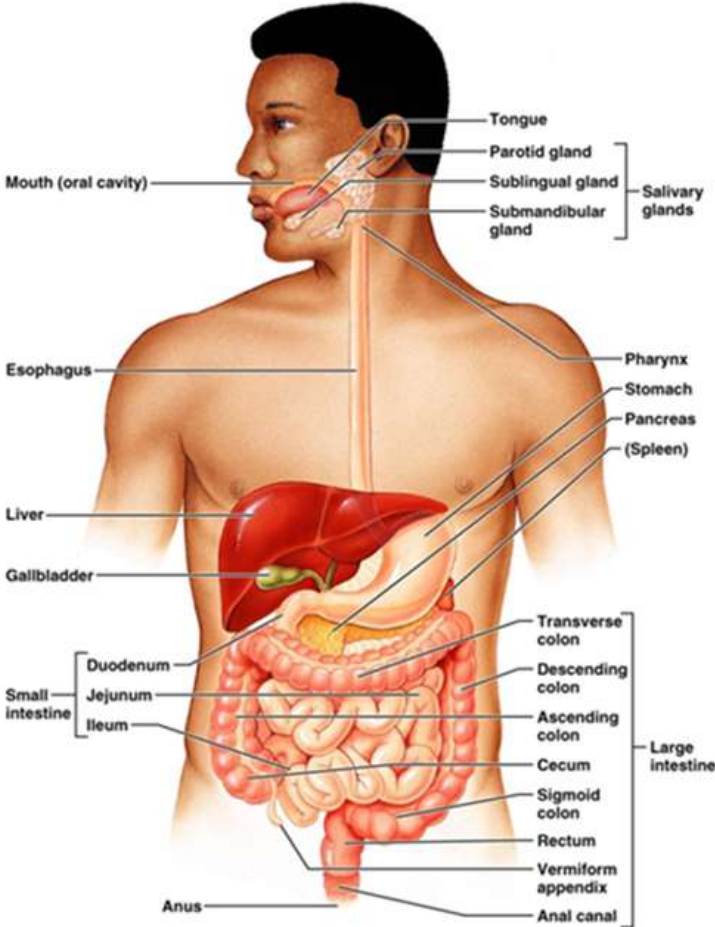


# Digestive, Gastrointestinal & Entero-Hepatic Systems





# Gastrointestinal System



# Gastrointestinal System Overview



The Gastrointestinal System is responsible for:

- Ingestion
- Secretion
- Mixing and Propulsion
- Digestion
- Absorption
- Defecation

Optimal health relies heavily on a functional gastrointestinal system



# Digestive System Overview



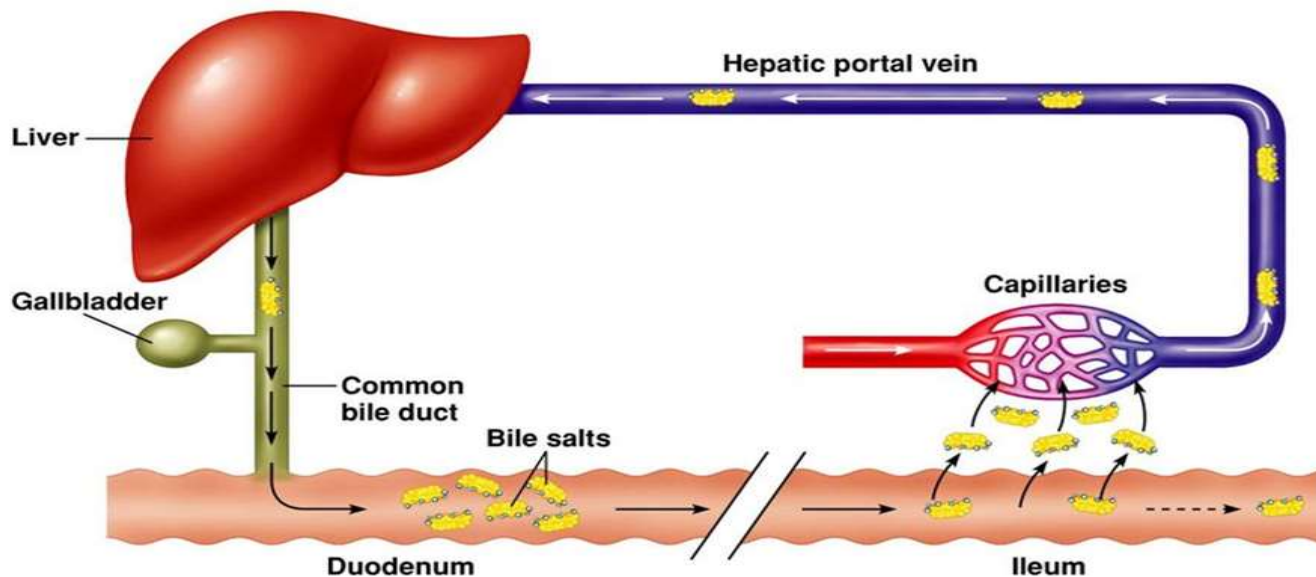
- The digestive system is a key segment of the gastro-intestinal tract, and is responsible for ingestion, secretion, mixing and propulsion, digestion, absorption and defecation
- Essentially, taking everything that we consume, processing it, absorbing nutrients, and finally expelling waste. This impacts our general health and wellbeing
- Our Enteric Nervous System (ENS) resides in the lining of our gastrointestinal tract and is referred to as our “second brain”. Hence the health of our digestive system impacts our health on numerous levels



# Entero-Hepatic System



This system facilitates Entero-Hepatic Circulation



# Entero-Hepatic System Overview



- The Entero-Hepatic System facilitates the circulation of bile salts, bilirubin, and other secretions from the liver to the bile then to the intestine where they are reabsorbed into the blood and returned to the liver; where they are secreted into the bile and again enter the intestine. The remainder of the bile is excreted in feces
- This caters to the cycling of metabolites after excretion in the biliary system, and reabsorption in the intestine





<b>SYSTEMIC COMPLEXES</b>	<b>FUNCTIONAL COMPLEXES</b>	<b>DRAINAGE COMPLEXES</b>
<p>UNDA 3 Gastrointestinal, Entero-hepatic and Cutaneous Systems (Pancreas, Liver and Small Intestine Health)</p>	<p>UNDA 17 Digestive and Cutaneous Systems (Intestinal Health)</p>	<p>UNDA 74 Digestive, Endocrine and Cardiovascular Systems (Portal System Health)</p>
<p>UNDA 4 Gastrointestinal and Central Nervous Systems (Stomach Health)</p>	<p>UNDA 24 Digestive and Nervous Systems (Support for Digestive and Nervous System Association Health)</p>	<p>UNDA 210 Digestive, Endocrine, Cardiovascular and Nervous Systems (Support for Digestive and Nervous System Association Health)</p>
<p>UNDA 6 Gastrointestinal System (Large Intestine Health and support for Healthy Bowel Movement)</p>	<p>UNDA 26 Digestive System (Mouth and Throat Health)</p>	<p>UNDA 226 Digestive System (Digestive Health)</p>
	<p>UNDA 31 Digestive System (Support for Cytokine Activity in the Digestive System)</p>	<p>UNDA 243 Digestive and Endocrine Systems (Digestion Support and Digestive Health)</p>
	<p>UNDA 34 Digestive and Endocrine Systems (Pancreas, Adrenal Health and Insulin Metabolism Support)</p>	<p>UNDA 295 Digestive System (Digestion Support)</p>

# DIGESTIVE: Gastrointestinal & Entero- Hepatic Systems





SYSTEMIC COMPLEXES	FUNCTIONAL COMPLEXES	DRAINAGE COMPLEXES
	UNDA 39 Digestive and Nervous Systems (Digestive and Nervous System Health)	
	UNDA 43 Digestive System (Digestive Health)	
	UNDA 46 Digestive System (Digestive Health)	
	UNDA 50 Digestive System (Colonic Health)	

# DIGESTIVE: Gastrointestinal & Entero- Hepatic Systems



# UNDA 3



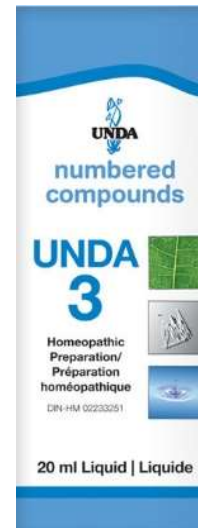
## Gastrointestinal System Application

### Organ System Applications:

Cutaneous, Entero-hepatic, Gastrointestinal

### Applications:

- Support for gastrointestinal health and function
- Temporary relief of symptoms associated with abdominal cramping, bloating and gas following meals:
  - Constipation
  - Abdominal bloating
  - Abdominal cramps
  - Stomach pains
  - Bloating
  - Flatulence



### FORMULA

Equisetum arvense	4x
Condurango	4x
Chamomilla	4x
Boldo	4x
Viola tricolor	4x
Aluminum metallicum	12x
Stannum metallicum	12x





# UNDA 4



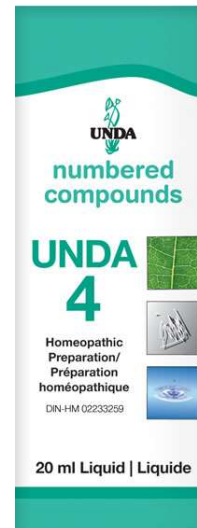
## Gastrointestinal System Application

### Organ System Applications:

Central Nervous, Gastrointestinal

### Applications:

- Support for gastrointestinal health and function
- Temporary relief of symptoms associated with stomach acidity, gas, belching and lack of appetite:
  - Loss of appetite
  - Stomach pain
  - Indigestion
  - Digestive aid
  - Bloating
  - Flatulence



### FORMULA

Absinthium	4x
Condurango	4x
Jateorhiza palmata	4x
Laurus nobilis	4x
Menyanthes trifoliata	4x
Rhamnus frangula	4x
Antimonium crudum	12x
Argentum metallicum	12x



# UNDA 6



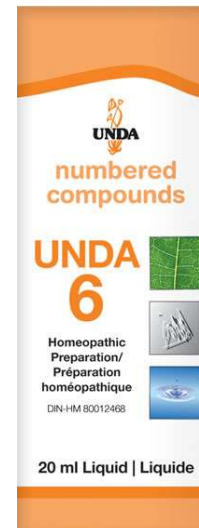
## Gastrointestinal System Application

### Organ System Applications:

Gastrointestinal

### Applications:

- Support for gastrointestinal health and function
- Temporary relief of symptoms associated with occasional constipation and flatulence:
  - Constipation
  - Flatulence
  - Compact stools

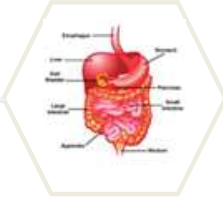


### FORMULA

Senna	4x
Foeniculum vulgare	4x
Illicium verum	4x
Rhamnus frangula	4x
Carum carvi	4x
Rhamnus cathartica	4x
Argentum metallicum	12x



# UNDA 17



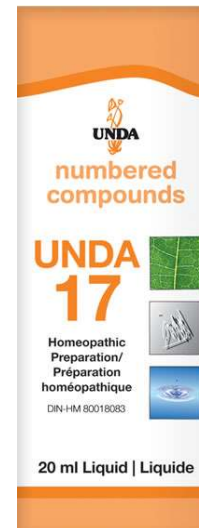
## Digestive System Application

### Organ System Applications:

Cutaneous, Digestive

### Applications:

- Temporary relief of symptoms associated with mild skin irritation and poor digestion:
  - Itching skin
  - Itchy skin rash
  - Dry skin
  - Painful skin eruptions
  - Poor digestion
  - Bloating
  - Flatulence

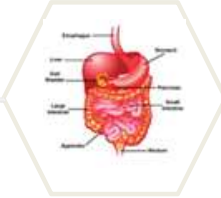


### FORMULA

Jateorhiza palmata	4x
Boldo	4x
Rhamnus frangula	4x
Rumex crispus	4x
Scabiosa succisa	4x
Dulcamara	4x
Valeriana officinalis	4x
Argentum metallicum	12x



# UNDA 24



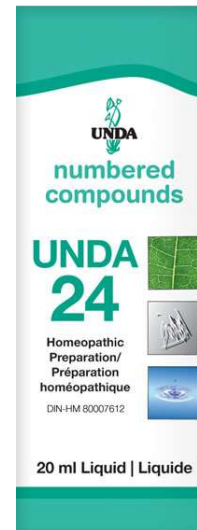
## Digestive System Application

### Organ System Applications:

Digestive, Nervous

### Applications:

- For the temporary relief of symptoms associated with mild digestive upset:
  - Heartburn
  - Constipation
  - Acid reflux
  - Indigestion
  - Flatulence
  - Bloating

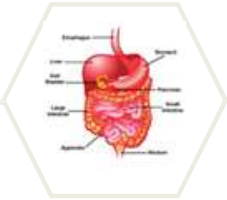


### FORMULA

Crataegus	4x
Chamomilla	4x
Passiflora incarnata	4x
Boldo	4x
Valeriana officinalis	4x
Aluminum metallicum	12x



# UNDA 26

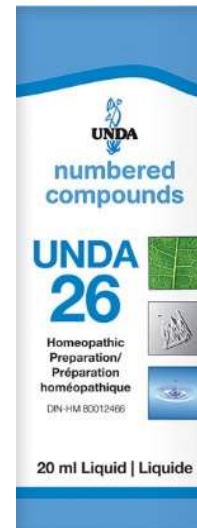


## Digestive System Application

### Organ System Applications: Digestive

#### Applications:

- For the relief of symptoms associated with minor inflammatory conditions of the gums and mouth:
  - Swollen tongue
  - Sensitive gums
  - Mouth ulcers

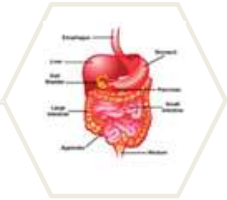


#### FORMULA

Apis mellifica	4x
Myrtus communis	4x
Argentum metallicum	12x



# UNDA 31

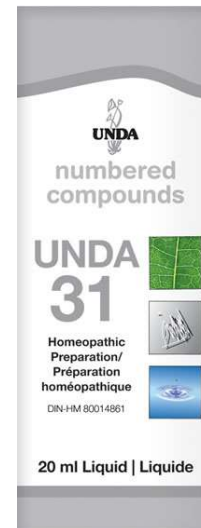


## Digestive System Application

### Organ System Applications: Digestive

#### Applications:

- Support for digestive health and the mucosal lining
- For the temporary relief of symptoms associated with mild stomach upset:
  - Heartburn
  - Abdominal cramps
  - Loss of appetite
  - Abdominal colic
  - Flatulence

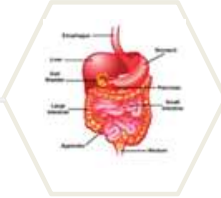


#### FORMULA

Carduus benedictus	4x
Lappa major	4x
Juniperus communis	4x
Robinia pseudoacacia	4x
Camphora	12x
Argentum metallicum	12x



# UNDA 34



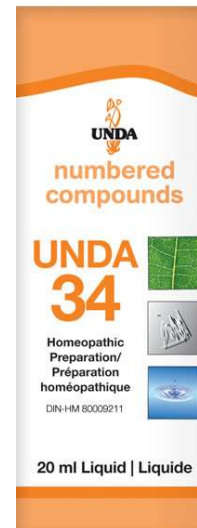
## Digestive System Application

### Organ System Applications:

Digestive, Endocrine

### Applications:

- Support for endocrine and digestive health
- For the temporary relief of fatigue and sleepiness after meals associated with thirst:
  - Drowsiness
  - Daytime drowsiness
  - Weakness
  - Thirst (great thirst)

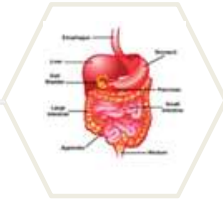


### FORMULA

Equisetum arvense	4x
Humulus lupulus	4x
Hydrastis canadensis	4x
Juniperus communis	4x
Syzygium jambolanum	4x
Aurum metallicum	12x



# UNDA 39

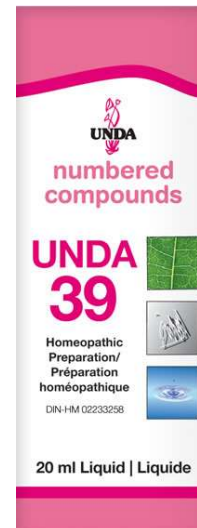


## Digestive System Application

### Organ System Applications: Digestive, Nervous

#### Applications:

- Support for digestive system health in association with the nervous system
- For the temporary relief of minor symptoms associated with irritability and anxiousness:
  - Nervousness
  - Restlessness
  - Irritability
  - Anxiety



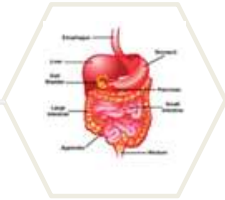
#### FORMULA

Allium cepa	4x
Absinthium	4x
Asafoetida	4x
Tanacetum vulgare	4x
Cina	6x
Dryopteris filix-mas	6x
Argentum metallicum	12x





# UNDA 43

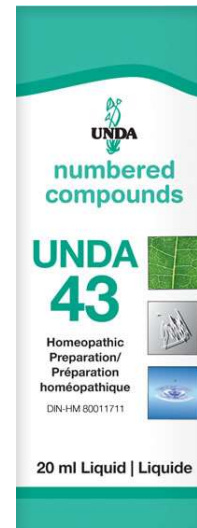


## Digestive System Application

### Organ System Applications: Digestive

#### Applications:

- For the temporary relief of symptoms associated with poor digestion:
  - Flatulence
  - Poor digestion
  - Bloating
  - Indigestion
  - Diarrhea

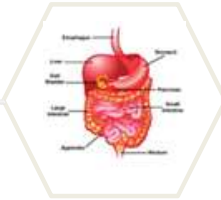


#### FORMULA

Asperula odorata	4x
Equisetum arvense	4x
Jateorhiza palmata	4x
Marrubium vulgare	4x
Ocimum basilicum	4x
Aluminum metallicum	12x
Stannum metallicum	12x



# UNDA 46

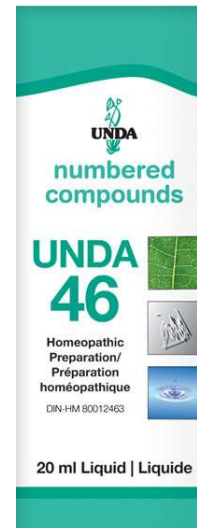


## Digestive System Application

### Organ System Applications: Digestive

#### Applications:

- For the temporary relief of symptoms associated with indigestion, lack of appetite and stomach aches:
  - Loss of appetite
  - Stomach pains
  - Nausea
  - Indigestion
  - Bloating

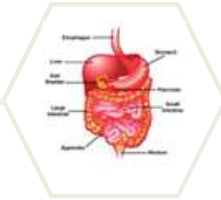


#### FORMULA

Absinthium	4x
Jateorhiza palmata	4x
Condurango	4x
Mentha piperita	4x
Aloe ferox	10x
Argentum metallicum	12x



# UNDA 50

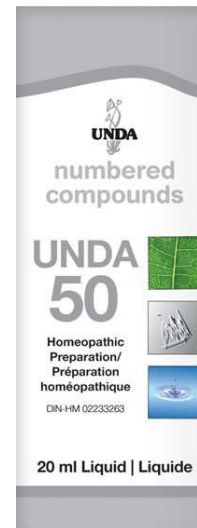


## Digestive System Application

### Organ System Applications: Digestive

#### Applications:

- For the temporary relief of symptoms associated with poor digestion:
  - Soft stool
  - Abdominal pains
  - Constipation
  - Cramps
  - Diarrhea

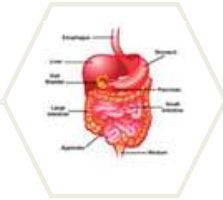


#### FORMULA

Millefolium	4x
Carduus marianus	4x
Senna	4x
Boldo	4x
Aluminum metallicum	12x
Argentum metallicum	12x



# UNDA 74



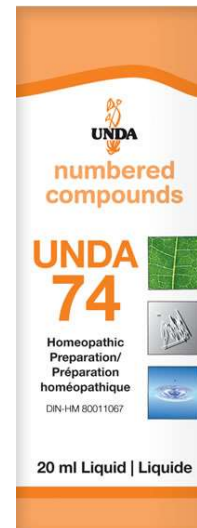
## Digestive System Application

### Organ System Applications:

Cardiovascular, Digestive, Endocrine

### Applications:

- For the temporary relief of symptoms associated with mild digestive distress:
  - Constipation
  - Bloating
  - Stomach cramps
  - Stomach acidity

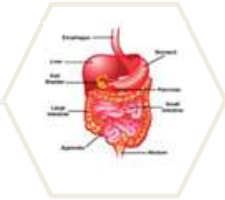


### FORMULA

Cynara scolymus	4x
Hamamelis virginiana	4x
Lycopodium clavatum	6x
Boldo	6x
Sepia	6x



# UNDA 210



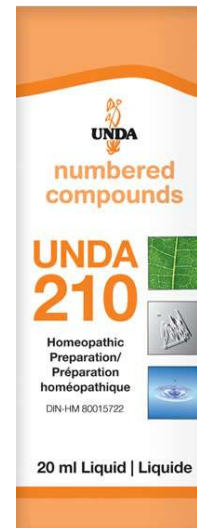
## Digestive System Application

### Organ System Applications:

Cardiovascular, Digestive, Endocrine, Nervous

### Applications:

- For the temporary relief of symptoms associated with mild anxiety and irritability:
  - Fatigue
  - Irritability
  - Restlessness
  - Sleeplessness
  - Anxiousness



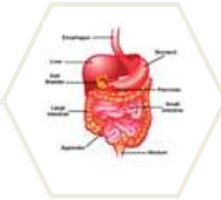
### FORMULA

Crataegus	4x
Lactuca virosa	4x
Passiflora incarnata	4x
Boldo	4x
Valeriana officinalis	4x

Note: Is similar to Unda 24



# UNDA 226

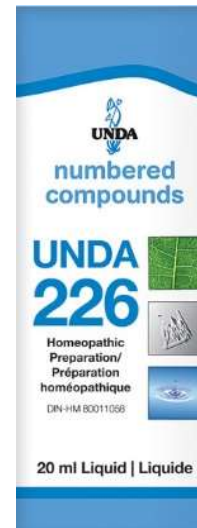


## Digestive System Application

### Organ System Applications: Digestive

#### Applications:

- For the temporary relief of symptoms associated with poor digestion and lack of appetite:
  - Bloating
  - Stomach pain
  - Constipation
  - Loss of appetite
  - Nausea

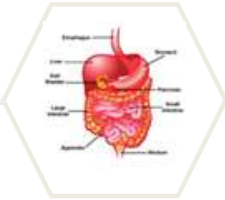


#### FORMULA

Aloe ferox	6x
Berberis vulgaris	6x
Chelidonium majus	6x
Juniperus communis	6x
Boldo	6x
Urtica dioica	6x



# UNDA 243



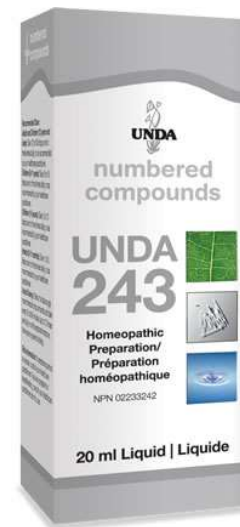
## Digestive System Application

### Organ System Applications:

Digestive, Endocrine,

### Applications:

- Support for digestive, hepatic and endocrine health
- For the temporary relief of symptoms associated with overindulgence in food and alcohol:
  - Atonic stomach
  - Abdominal pain
  - Food overindulgence
  - Stomach ache
  - Headache

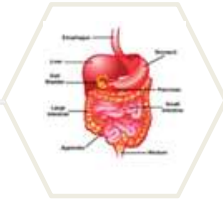


### FORMULA

Combretum raimbaultii	4x
Lycopodium clavatum	4x
Boldo	4x
Podophyllum peltatum	4x
Cholesterinum	12x



# UNDA 295

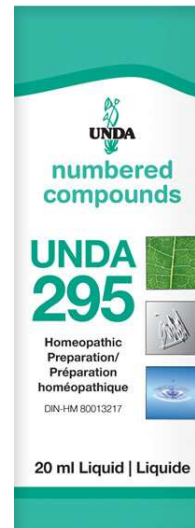


## Digestive System Application

### Organ System Applications: Digestive

#### Applications:

- For the temporary relief of symptoms associated with mild indigestion:
  - Bloating
  - Abdominal colic
  - Flatulent colic
  - Indigestion



#### FORMULA

Nux vomica	4x
Pulsatilla	4x
Aloe ferox	6x





# Gastrointestinal & General Immune System Support

The Gastrointestinal & General Immune System Support protocol plan consists of formulas to support key emunctories related to digestive and gastrointestinal health, while respecting the body's natural physiology. This protocol plan facilitates the emunctories at an intracellular and extracellular level and also consists of a synergistic Genestra Brands™ immune system Phyto-gen remedy

The Gastrointestinal & General Immune System Support protocol plan consists of:

- UNDA Numbers 3, 20 & 50
- Imu-gen Phyto-gen



# Clinical Case # 2



# 36 year Old Male presents with Impaired Gastroesophageal Health Function



- Complaints of hyper-acidity & indigestion
- Heartburn and a lot of heaviness and regurgitation the last 1 ½ years
- Symptoms are often every other day.
- < heavy meals, eating late, certain food items.
- Vegetarian, liked spicy and sweet food a lot, thirst was minimal
- Stool, perspiration, and sleep were ok.
- Physique was normal
- Mentally very anxious & sad, short-tempered.
- Very emotional, every small thing is upsetting.
- His mental status was predominantly related to the physical symptoms

Vitals 174 #, 123/78, 78, 97.8°F, 98%

Abdomen – BS4Q, no tenderness

- PROTOCOL PLAN



# Basic Protocol Guidelines (BTG) - General



- Outside 30+ minutes a day (sunshine)
- Play, have fun daily
- Deep Breathing
- Water
- Movement (lymph)
- Hydrotherapy - dry skin brushing, castor oil packs
- Sleep hygiene

- Apple cider vinegar
- Diet- AI, IR, GF, CF blood type, EAV, allergy free, etc.
- EFA's - flax, chia, hemp, sunflower, sesame, pumpkin, fish oils, EPO
- Probiotics
- Minerals, vitamins



## Basic Protocol Guidelines – 36 Year Old Male (Impaired Gastroesophageal Health Function)



- Outside 30+ minutes a day play, have fun daily
- Deep Breathing - 100 a day
- 88 oz Water
- walk 150+ minutes/week
- dry skin brushing, castor oil packs evening
- Sleep hygiene – in dark, 10:30PM, no Wi-Fi

- Apple cider vinegar
- Diet- Anti-inflammatory
- EFA's - flax, chia,
- Fish oil
- HMF Intensive 50
- Trace mineral complex CWS



## 36 Year Old Male presents with Impaired Gastroesophageal Health Function



1. BTG (for all patients)
2. Amino-L glutamine powder - 1 scoop AM and PM
3. Unda 4, 24, 43 (226) 5 drops 3x a day
4. Calm-gen 10 drops 2x a day





# Renal & Urinary Systems



# Renal System





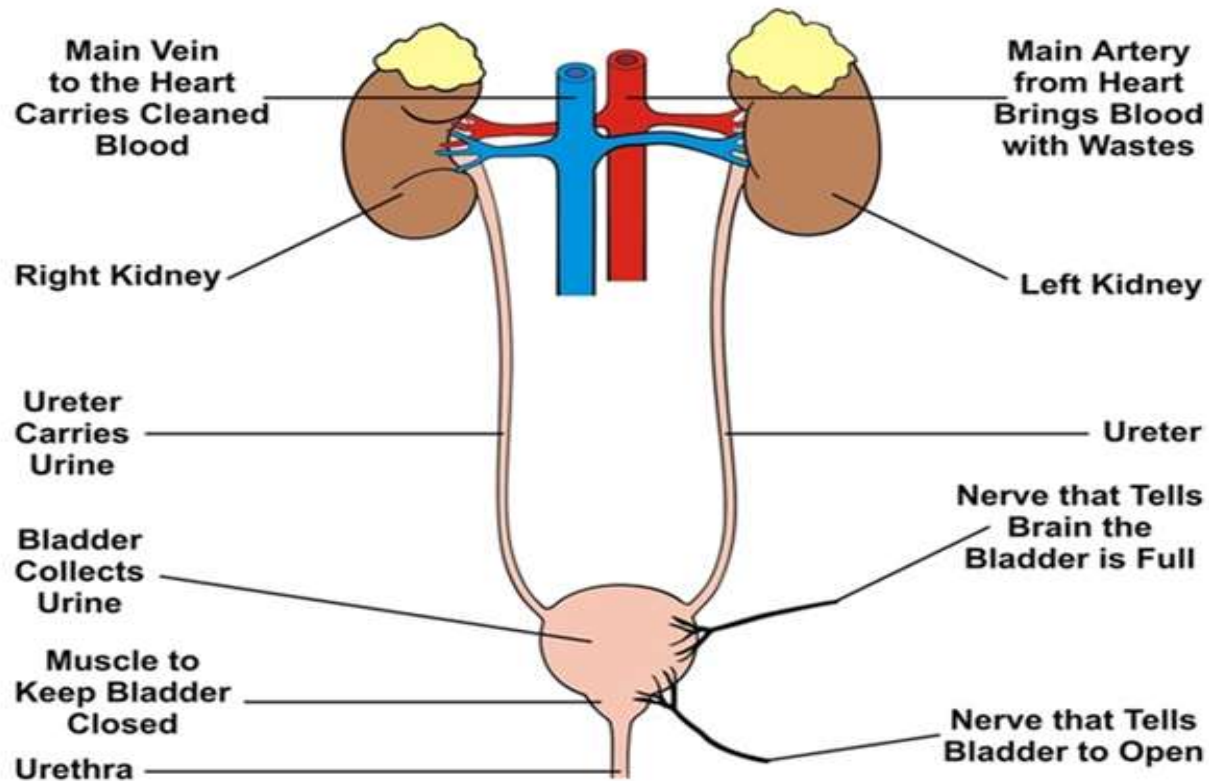
# Renal System Overview



- Relating primarily to kidney function, the renal system is essential
- Kidneys are responsible for several key functions in the body including balancing body fluids, extracting waste by filtering blood to produce urine and releasing specific hormones to maintain optimal health
- On any given day our kidneys filter approximately 200 quarts of blood to process about 2 quarts of waste products and extra water from our system
- In balancing body fluids, the kidneys regulate minerals such as potassium, sodium and phosphorus – gauges them and determines the quantities that need to be released back into the blood for use and proper health maintenance
- The kidneys also release key hormones and substances



# Urinary System



# Urinary System Overview



- The urinary system comprises of the kidneys, bladder, ureters and the urethra. Among several functions, the urinary system is responsible for:
  - Regulation of blood ionic composition
  - Regulation of blood pressure
  - Production of hormones
  - Regulation of blood glucose
  - Excretion of wastes and foreign substance
- On any given day our kidneys filter approximately 200 quarts of blood to process about 2 quarts of waste products and extra water from our system





# RENAL & URINARY SYSTEMS

<b>SYSTEMIC COMPLEXES</b>	<b>FUNCTIONAL COMPLEXES</b>	<b>DRAINAGE COMPLEXES</b>
<p>UNDA 1 Renal, Hepatic and Gastrointestinal Systems (Liver, Gallbladder and Kidney Health)</p>	<p>UNDA 23 Urinary System (Urinary Tract Health and Immune Support of the Urinary System)</p>	<p>UNDA 240 Urinary and Skeletal Systems (Urinary Support and Healthy Mineral Balance)</p>
<p>UNDA 2 Urinary System (Kidney Health, High Temperature Relief and Immune Support)</p>	<p>UNDA 38 Urinary System (Prostate and Pelvic Health)</p>	<p>UNDA 258 Urinary and Digestive Systems (Catabolic Support)</p>
<p>UNDA 7 Urinary System (Urinary Tract Health)</p>	<p>UNDA 44 Urinary System (Immune Support of the Urinary System)</p>	<p>UNDA 270 Renal and Cutaneous Systems</p>
<p>UNDA 15 Urinary and Respiratory Systems (Supporting Relief of High Temperature)</p>	<p>UNDA 45 Urinary System (Kidney Health)</p>	
	<p>UNDA 48 Urinary, Endocrine, Cardiovascular, Respiratory Systems (Prostate and Bladder Health)</p>	



# UNDA 1

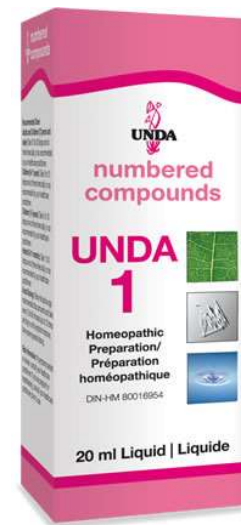


## Renal System Application

**Organ System Applications:**  
Gastrointestinal, Hepatic, Renal

### Applications:

- Support for hepatic health and function
- Temporary relief of symptoms associated with indigestion, fatigue following meals and occasional headaches:
  - Indigestion
  - Abdominal pain
  - Headache
  - Fatigue
  - Belching

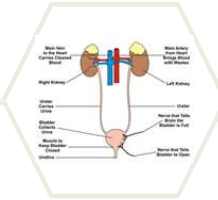


### FORMULA

Millefolium	4x
Angelica archangelica	4x
Uva-ursi	4x
Equisetum arvense	4x
Lycopodium clavatum	4x
Terebinthina laricina	5x
Valeriana officinalis	4x
Argentum metallicum	12x



# UNDA 2



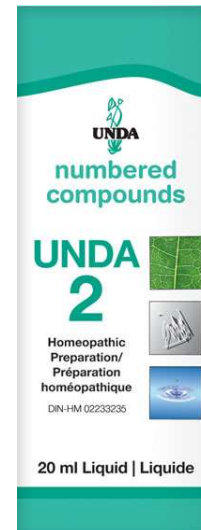
## Urinary System Application

### Organ System Applications:

#### Urinary

#### Applications:

- Support for urinary health and function
- Temporary relief of symptoms associated with minor fever:
  - Sweating
  - Sneezing
  - Fever
  - Headache
  - Nausea
  - Swollen tonsils

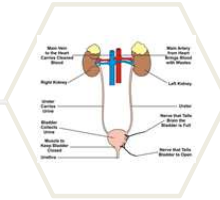


#### FORMULA

Asparagus officinalis	4x
Berberis vulgaris	4x
Genista tinctoria	4x
Juniperus communis	4x
Petroselinum sativum	4x
Rhamnus frangula	4x
Thlaspi bursa-pastoris	4x
Argentum metallicum	12x



# UNDA 7



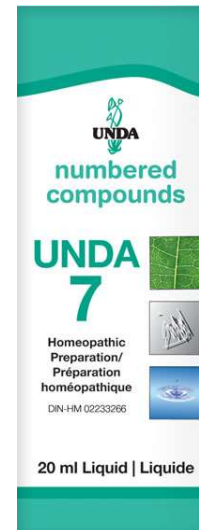
## Urinary System Application

### Organ System Applications:

Urinary

#### Applications:

- Support for urinary health and function
- Temporary relief of symptoms associated with difficult urination and occasional incontinence:
  - Frequent urination
  - Burning along the urinary tract
  - Incontinence
  - Difficult urination
  - Painful urination

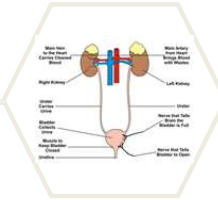


#### FORMULA

Uva-ursi	4x
Equisetum arvense	4x
Cytisus scoparius	4x
Juniperus communis	4x
Hieracium pilosella	4x
Argentum metallicum	12x



# UNDA 15



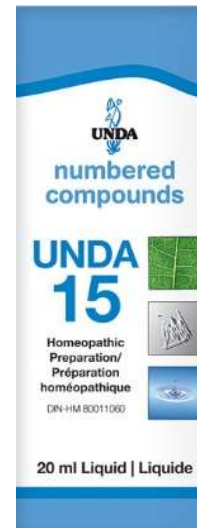
## Urinary System Application

### Organ System Applications:

Respiratory, Urinary

### Applications:

- Support for immune health function
- Temporary relief of mild fever:
  - Chills
  - Head and body aches
  - Weakness
  - Headache
  - Fever



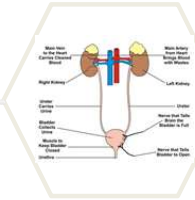
### FORMULA

Allium cepa	4x
Eucalyptus globulus	4x
Trigonella foenum graecum	4x
Inula helenium	4x
Aurum metallicum	12x





# UNDA 23



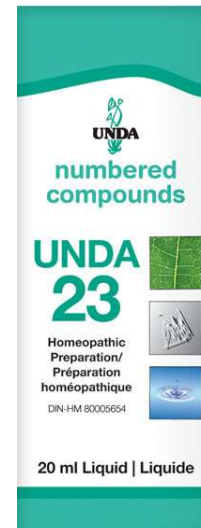
## Urinary System Application

### Organ System Applications:

#### Urinary

#### Applications:

- For the temporary relief of symptoms associated with occasional incontinence and minor urinary discomfort:
  - Involuntary urination
  - Frequent, painful urination
  - Increased urine flow
  - Nightly urinary urges
  - Burning, soreness, sensitivity



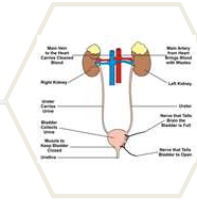
#### FORMULA

Equisetum arvense	5x
Hypericum perforatum	5x
Nux vomica	6x
Tormentilla	6x
Quercus rubra	6x

Note: This remedy does not have any metals



# UNDA 38

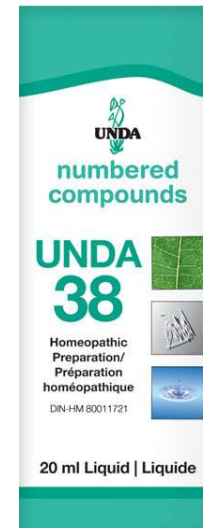


## Urinary System Application

### Organ System Applications: Urinary

#### Applications:

- For the relief of symptoms associated with minor difficulties in urination:
  - Frequent urination
  - Urge to urinate
  - Burning sensations
  - Suppressed urination
  - Straining during urination

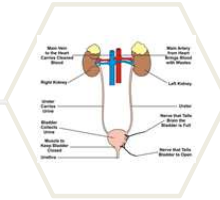


#### FORMULA

Inula helenium	4x
Sarsaparilla	4x
Valeriana officinalis	4x
Stigmata maidis	4x
Aluminum metallicum	12x
Argentum metallicum	12x



# UNDA 44

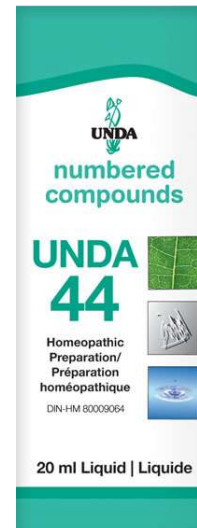


## Urinary System Application

### Organ System Applications: Urinary

#### Applications:

- For the temporary relief of symptoms associated with minor urinary discomfort:
  - Frequent urination
  - Painful urination
  - Painful retention of urine
  - Burning along urinary tract
  - Difficult urination
  - Urge to urinate
  - Scanty urination

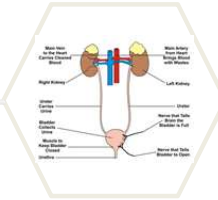


#### FORMULA

Uva-ursi	4x
Inula helenium	4x
Juniperus communis	4x
Dulcamara	4x
Stigmata maidis	4x
Cytisus scoparius	4x
Argentum metallicum	12x
Aurum metallicum	12x



# UNDA 45

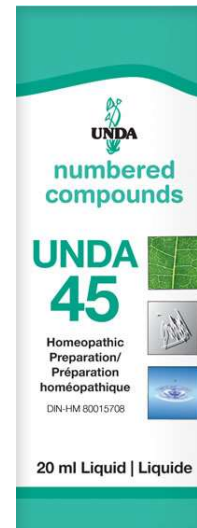


## Urinary System Application

### Organ System Applications: Urinary

#### Applications:

- For the temporary relief of symptoms associated with minor urinary discomfort:
  - Frequent urination
  - Difficult urination
  - Painful urination
  - Bladder weakness
  - Frequent urge to urinate

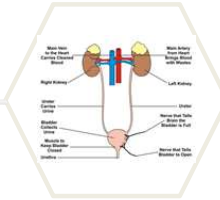


#### FORMULA

Millefolium	5x
Uva-ursi	5x
Equisetum arvense	5x
Saxifraga granulata	5x
Dulcamara	5x
Stannum metallicum	12x
Argentum metallicum	12x



# UNDA 48



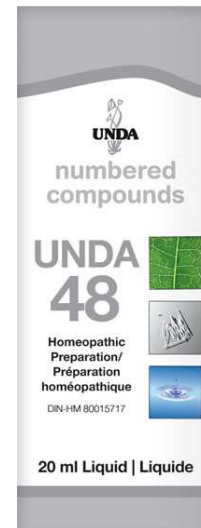
## Urinary System Application

### Organ System Applications:

Cardiovascular, Endocrine, Respiratory, Urinary

### Applications:

- For the temporary relief of minor symptoms associated with low energy and fatigue:
  - Drowsiness
  - Fatigue
  - Headache
  - Restless sleep
  - Lethargy
  - Weakness
  - Sleeplessness

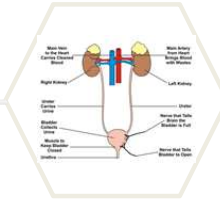


### FORMULA

Calendula officinalis	4x
Condurango	4x
Sabina	4x
Lycopodium clavatum	4x
Thuja occidentalis	4x
Arsenicum album	12x
Aurum metallicum	12x
Plumbum metallicum	12x



# UNDA 240



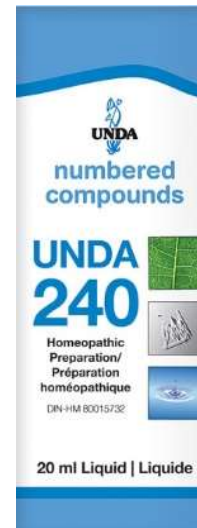
## Urinary System Application

### Organ System Applications:

Skeletal, Urinary

### Applications:

- For the temporary relief of symptoms associated with growing pains:
  - Headache, weakness
  - Body aches
  - Limb heaviness

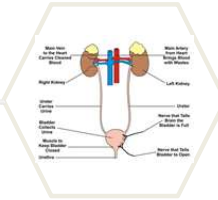


### FORMULA

Equisetum arvense	6x
Gentiana lutea	6x
Salvia officinalis	6x
Saxifraga granulata	6x
Spiraea ulmaria	6x



# UNDA 258



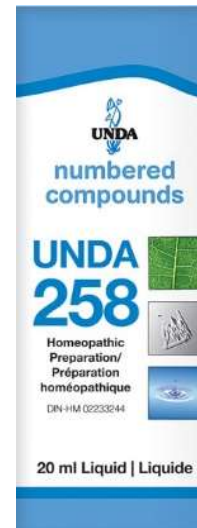
## Urinary System Application

### Organ System Applications:

Digestive, Urinary

### Applications:

- For the temporary relief of symptoms associated with poor digestion and minor urinary discomfort:
  - Stomach pain
  - Constipation
  - Poor digestion
  - Flatulence
  - Frequent urination
  - Painful urination



### FORMULA

Berberis vulgaris	4x
Bryonia dioica	4x
Hydrastis canadensis	4x
Lycopodium clavatum	4x
Mercurialis annua	4x
Boldo	4x
Solidago virgaurea	4x



# UNDA 270



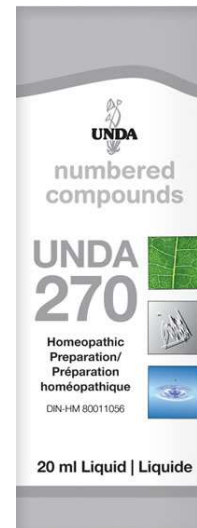
## Renal System Application

### Organ System Applications:

Cutaneous, Renal

### Applications:

- Skin health and renal support
- For the temporary relief of symptoms associated with minor skin irritation and occasional headache:
  - Headache
  - Skin eruptions
  - Skin blisters
  - Red spots on skin
  - Dry skin



### FORMULA

Calendula officinalis	4x
Equisetum arvense	4x
Hypericum perforatum	4x
Dulcamara	4x

Note: Also available as an ointment for topical use – will not cause suppression





# Clinical Case # 3



# 26 Year Old Female

## Impaired Urinary Tract Health



- African-american female reports that for the last four weeks, frequent urging, strong odor and burning sensation whenever she eliminates
- She has switched methods of birth control so that she has been using a diaphragm for about five or six weeks. This occurred because she had begun having a sporadic sexual relationship with a man who refuses to use condoms
- She has tried drinking cranberry juice, but has only found that as time goes on, it seems to get worse
- She has only had a urinary tract infection once before, about four years ago, and it followed a bout with severe diarrhea; treated with a 10 day course of antibiotics



# 26 Year Old Female

## Impaired Urinary Tract Health



- Diagnosed with hypertension and high cholesterol at age 20, and has been taking medication ever since
- She experiences chronic knee and back pain, the result of an injury she sustained during a car accident five years ago
- Has been smoking since the age of 15, and reports that she has a chronic cough takes over-the-counter cough medicine
- She has always had difficulty sleeping; as a child, she frequently stayed up almost all night because of her inability to sleep. For many years, a physician has been prescribing medication for her to take at bedtime, which has helped her sleep approximately six or seven hours per night



# 26 Year Old Female

## Impaired Urinary Tract Health



- Several oral medications all at bedtime: Avapro 300mg; Zocor 10mg Diazepam 2mg ; Klonopin, 1 mg,
- Allegra 60 mg, 1-2x/day during allergy season; sometimes uses Benadryl, relieve her allergy symptoms and also helps her to sleep.
- Vitamin D 1000 iu, Vitamin C 500 mg, Omega-3 Fish Oil 1000 mg, Glucosamine Chondroitin 1200 mg BID, and Vitamin E 400 IU per day.

O: 124#, 130/90, 88, 98.2°F, 17, 97%

pelvic exam sensitivity when touched as well as a strong, abnormal odor

respiration was within normal limits although when asked to take a deep breath, the patient coughed several times

Dip – nitrate+, leukocyte esterase +, blood +

- PROTOCOL PLAN



## 26 Year Old Female Impaired Urinary Tract Health



- Unda 2, 7, 44                      5 drops 6x/day
- Zea Mays                              75 drops 3x/day
- Heather Young Shoot              10 drops 3x/day
- Nat mur 6x                            2 tabs 3x/day
- HMF Cystgen                        ½ sachet 2x/day

Continue until 2 days after total resolution of all symptoms



# Urinary & Renal Health Support



The Urinary & Renal Health Support protocol plan consists of synergistic formulas to support the key emunctory relating to urinary tract health (the kidney), while respecting the body's natural physiology. This protocol plan facilitates the emunctories at an intracellular and extracellular level and also consists of a synergistic Genestra Brands™ renal system Phyto-gen remedy

The Urinary & Renal Health Support protocol plan consists of:

- UNDA Numbers 2, 7 & 44
- Heather Young Shoot Phyto-gen

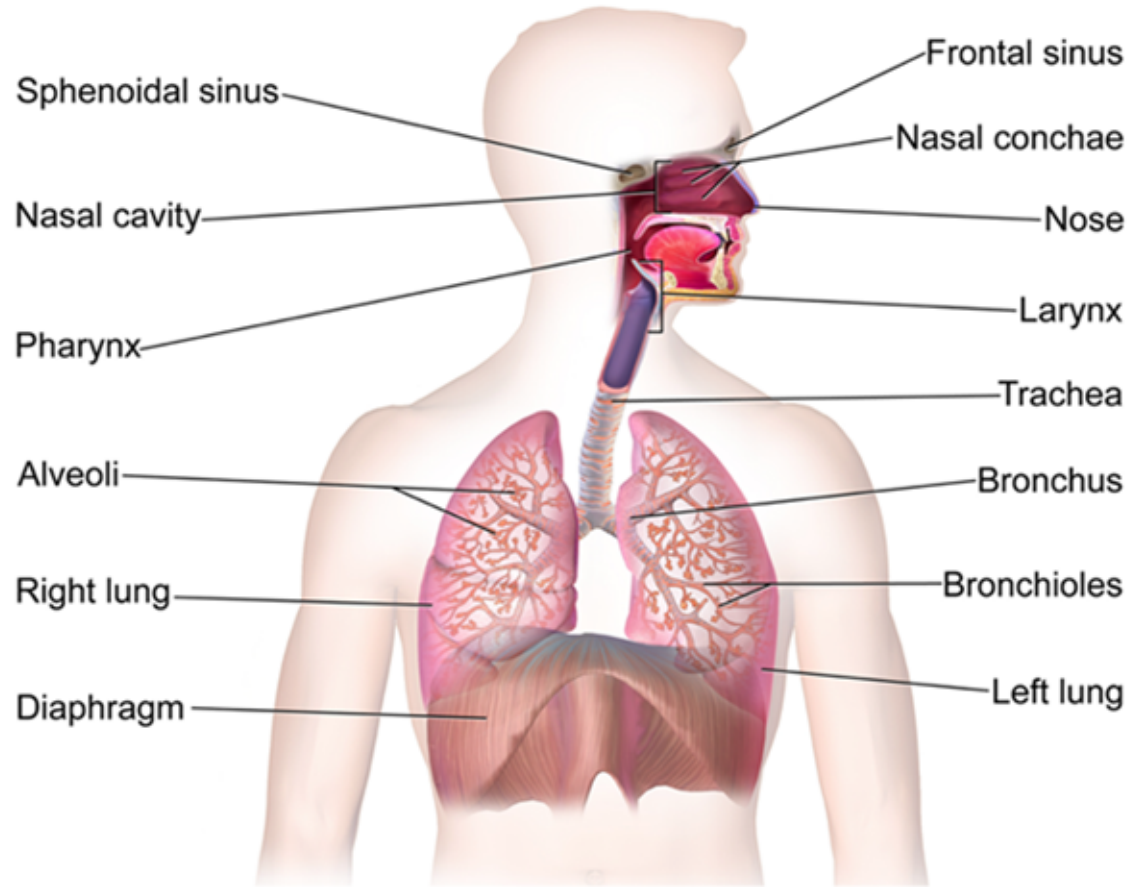




# Respiratory System



# Respiratory System





# Respiratory System Overview



- The respiratory system consists of the nose, nasal cavity, trachea, sinuses, larynx, pharynx, bronchi, lungs, and diaphragm
- This system includes one of the key emunctories of the body. Primary functions of the respiratory system are, to facilitate:
  - O<sub>2</sub> and CO<sub>2</sub> gas exchange
  - Altering pH of blood
  - Angiotensin converting enzyme
  - Shock absorbency for the heart





SYSTEMIC COMPLEXES	FUNCTIONAL COMPLEXES	DRAINAGE COMPLEXES
<p>UNDA 5 Respiratory System (Lung and Bronchial Health)</p>	<p>UNDA 19 Respiratory System (Support for Deteriorating Lung Health)</p>	<p>UNDA 220 Respiratory System (Respiratory Health Function and Skin Health)</p>
<p>UNDA 14 Respiratory, Digestive, Endocrine &amp; Urinary Systems (Support for Deteriorating Pulmonary Health)</p>	<p>UNDA 27 Respiratory System (Immune System Support for Lung and Bronchial Health)</p>	<p>UNDA 312 Respiratory System (Immune Support Relating to the Upper Respiratory Tract, Larynx and Pharynx)</p>
<p>UNDA 15 Respiratory and Urinary Systems (Immune System Support and Relief for High Temperature)</p>	<p>UNDA 32 Respiratory System (Support for Cytokine Activity Relating to Bronchiole and Bronchial Health)</p>	<p>UNDA 710 Respiratory and Cutaneous Systems (Sinus Health and Cytokine Activity in “Closed Areas”)</p>
<p>UNDA 16 Respiratory and Endocrine Systems (Support for Deteriorating Pulmonary Health)</p>	<p>UNDA 35 Respiratory System (Respiratory Health Function)</p>	
	<p>UNDA 37 Respiratory, Cardiovascular, Digestive &amp; Immune Systems (Support for Immune Function and Natural Defenses)</p>	

# RESPIRATORY SYSTEM



# UNDA 5



## Respiratory System Application

### Organ System Applications: Respiratory

#### Applications:

- Support for respiratory health and function
- Temporary relief of symptoms associated with common colds:
  - Fever
  - Cough
  - Cold sweats
  - Excess mucus
  - Dry cough
  - Sore throat



#### FORMULA

Adiantum capillus veneris	4x
Drosera	4x
Glycyrrhiza glabra	4x
Grindelia	4x
Inula helenium	4x
Tormentilla	4x
Tussilago farfara	4x
Argentum metallicum	12x
Cuprum metallicum	12x



# UNDA 14



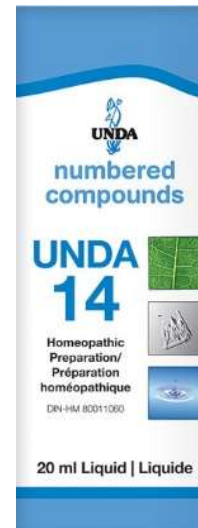
## Respiratory System Application

### Organ System Applications:

Digestive, Endocrine, Respiratory, Urinary

### Applications:

- Temporary relief of symptoms associated with low energy and common colds:
  - Cough
  - Fatigue
  - Weakness
  - Chills
  - Congestion
  - Headache



### FORMULA

Camphora	4x
Eucalyptus globulus	4x
Inula helenium	4x
Jateorhiza palmata	4x
Argentum metallicum	12x
Aurum metallicum	12x
Cuprum metallicum	12x



# UNDA 15



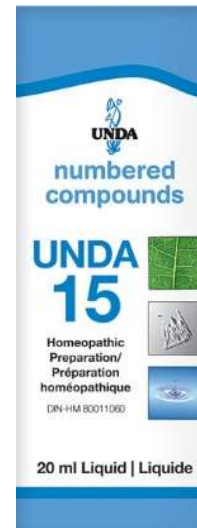
## Respiratory System Application

### Organ System Applications:

Respiratory, Urinary

### Applications:

- Support for immune health function
- Temporary relief of mild fever:
  - Chills
  - Head and body aches
  - Weakness
  - Headache
  - Fever



### FORMULA

Allium cepa	4x
Eucalyptus globulus	4x
Trigonella foenum graecum	4x
Inula helenium	4x
Aurum metallicum	12x



# UNDA 16



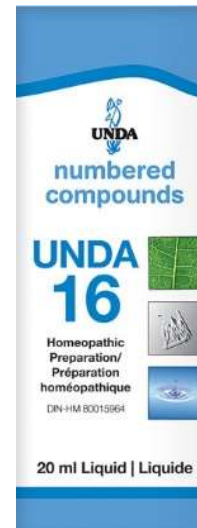
## Respiratory System Application

### Organ System Applications:

Endocrine, Respiratory

### Applications:

- Support for endocrine and respiratory health
- Temporary relief of symptoms associated with minor respiratory problems:
  - Cough
  - Tickling cough
  - Body aches
  - Irritated throat
  - Mucus formation



### FORMULA

Ajuga reptans	4x
Drosera	4x
Lactuca virosa	4x
Origanum vulgare	4x
Saxifraga granulata	4x
Veronica officinalis	4x
Senega	4x
Argentum metallicum	12x
Aurum metallicum	12x



# UNDA 19

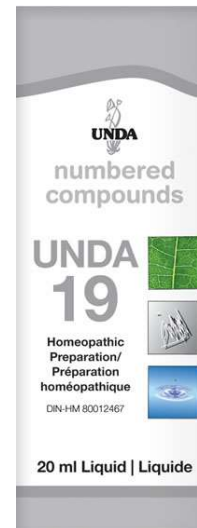


## Respiratory System Application

### Organ System Applications: Respiratory

#### Applications:

- For the temporary relief of symptoms associated with minor respiratory problems:
  - Cough
  - Dry cough
  - Dry throat



#### FORMULA

Drosera	5x
Illicium anisatum	3x
Mentha piperita	5x
Senega	4x
Aluminum metallicum	12x



# UNDA 27

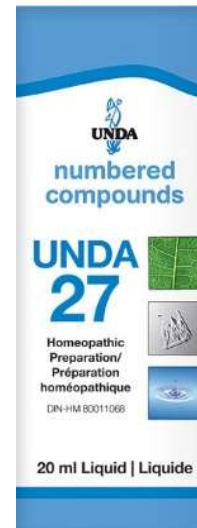


## Respiratory System Application

### Organ System Applications: Respiratory

#### Applications:

- Support for upper respiratory health
- For the temporary relief of symptoms associated with minor throat irritation:
  - Loss of voice
  - Cough
  - Hoarseness
  - Dry throat



#### FORMULA

Borago officinalis	4x
Cetraria islandica	4x
Drosera	4x
Mentha piperita	4x
Senega	4x
Antimonium crudum	12x





# UNDA 32

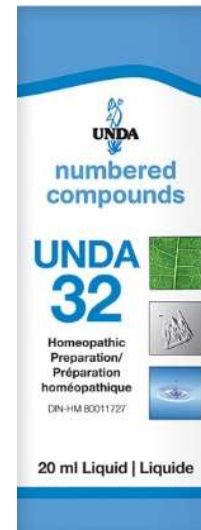


## Respiratory System Application

### Organ System Applications: Respiratory

#### Applications:

- For the temporary relief of coughs:
  - Dry cough
  - Cough
  - Irritated throat



#### FORMULA

Aconitum napellus	4x
Borago officinalis	4x
Camphora	4x
Grindelia	4x
Argentum metallicum	12x
Stannum metallicum	12x



# UNDA 35



## Respiratory System Application

### Organ System Applications: Respiratory

#### Applications:

- For the temporary relief of symptoms associated with a cough:
  - Chest congestion
  - Cough
  - Dry throat



#### FORMULA

Crataegus	4x
Grindelia	4x
Hamamelis virginiana	4x
Mentha piperita	4x
Myrtus communis	4x
Corallium rubrum	12x
Aurum metallicum	12x



# UNDA 37



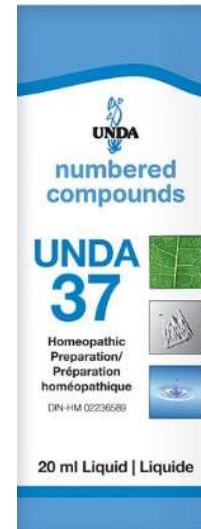
## Respiratory System Application

### Organ System Applications:

Cardiovascular, Digestive, Immune, Respiratory

### Applications:

- For the temporary relief of symptoms associated with general minor inflammation:
  - Sore joints
  - Minor swelling
  - Redness with pain
  - Stiffness with pain
  - Stiff neck
  - Joint stiffness
  - Fever



### FORMULA

Calendula officinalis	4x
Hypericum perforatum	4x
Lycopodium clavatum	4x
Petroselinum sativum	4x
Dulcamara	4x
Aurum metallicum	12x
Argentum metallicum	12x



# UNDA 220

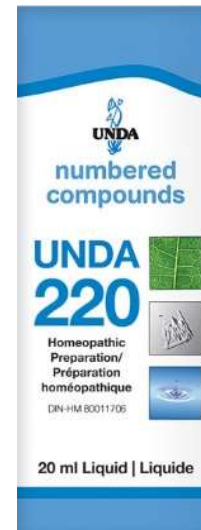


## Respiratory System Application

### Organ System Applications: Respiratory

#### Applications:

- Support for the upper respiratory system
- For the temporary relief of symptoms associated with a cough:
  - Cough
  - Expectorations



#### FORMULA

Stramonium	6x
Grindelia	6x
Pilocarpus	6x
Senega	6x
Salvia officinalis	6x
Valeriana officinalis	6x



# UNDA 312

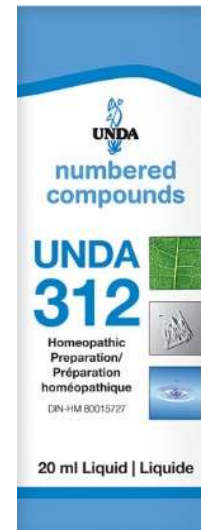


## Respiratory System Application

### Organ System Applications: Respiratory

#### Applications:

- Support for upper respiratory health
- For the temporary relief of symptoms associated with sore throat:
  - Difficulty swallowing
  - Cough
  - Itching
  - Sore throat



#### FORMULA

Angelica archangelica	6x
Lamium album	6x
Pinus sylvestris	6x
Rubus fruticosus	6x
Drosera	6x
Grindelia	6x
Senega	6x



# UNDA 710



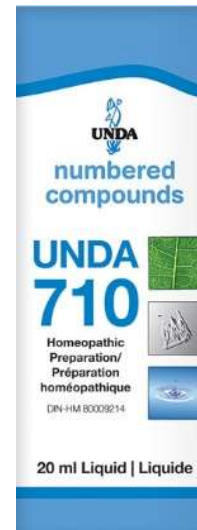
## Respiratory System Application

### Organ System Applications:

Cutaneous, Respiratory

### Applications:

- For the temporary relief of symptoms associated with common colds:
  - Headache
  - Tiredness
  - Fever
  - Runny nose
  - Swollen glands
  - Sore throat
  - Congestion



### FORMULA

Apis mellifica	4x
Calendula officinalis	4x
Lycopodium clavatum	4x
Dulcamara	4x
Aurum metallicum	12x

Note: Contains 1 metal



# Clinical Case # 4



# 36 Year Old Female

## Impaired Natural Defenses in the Respiratory System



- Has been taking OTC loratadine (Claritin) for a few weeks to manage her seasonal allergy symptoms but reports nonpainful, bilateral, thin, clear discharge from her nose, and sneezing that negatively impacts her ability to sleep and complete schoolwork
- Denies any epistaxis or anosmia

O: 136#, 122/ 84, 18, 97.8°F, 99

- PROTOCOL PLAN





## 36 Year Old Female

# Impaired Natural Defenses in the Respiratory System



- BTGs
- Scorbatate ¼ tsp AM and PM
- Super Flavonoids 1 cap AM and PM
- Unda 5, 14, 27 5 drops 3x/day
- Viburnum Lantana 75 drops (¾ tsp) AM and PM
- Al-gen 10 drops AM and PM
- Nebulizer 5mls saline + 10 drops of Unda  
1, 2, 710





# Upcoming Sessions Complimentary Webinar Series

## Complimentary 7-Session Webinar Series

### UNDA Numbered Compounds:

Patient Assessment, Evaluation and Practical Application

Presented by **Dr. Dickson Thom DDS ND**



**Wednesdays, February 5 - May 6, 2020**  
**8:00 – 10:00 PM EST/ 5:00 – 7:00 PM PST**

(To register for all sessions at the same time, please go to [serovalevents.webex.com](http://serovalevents.webex.com),  
click on the "Unda Numbered Compounds" header, select all remaining sessions and click on Register)

***If not registered yet, please register for the upcoming sessions!***  
***(please note that a WebEx reminder is being sent on Fridays before each live session)***



# Upcoming Atrium Innovations Events



## Evening Intensive

### Integrative Effect of Probiotics on Whole Body Health

Emerging Evidence and Mechanisms

**Dr. Nigel Plummer, PhD**

**April 14, 2020 - Ottawa, ON**

**April 16, 2020 – Barrie, ON**

**September 23, 2020 – Calgary, AB**

[GenestraHMFPlummerOttawa.eventbrite.ca](https://www.eventbrite.ca/e/genestra-hmf-plummer-ottawa-tickets-114048614487)

[GenestraHMFPlummerBarrie.eventbrite.ca](https://www.eventbrite.ca/e/genestra-hmf-plummer-barrie-tickets-114048614487)

[GenestraHMFPlummerCalgary.eventbrite.ca](https://www.eventbrite.ca/e/genestra-hmf-plummer-calgary-tickets-114048614487)



# Upcoming Atrium Innovations Events



## One Day Intensive

### Functional Immunology:

Unravelling Inflammatory and Autoimmune Dysfunction  
including New Microbiome Research

**Dr. Nigel Plummer, PhD** and  
**Dr. Samuel Yanuck, D.C., FACFN, FIAMA**



**April 18, 2020 – Toronto, ON**

**September 26, 2020 – Vancouver, BC**

[FunctionallimmunologyON.eventbrite.ca](https://FunctionallimmunologyON.eventbrite.ca)

[FunctionallimmunologyBC.eventbrite.ca](https://FunctionallimmunologyBC.eventbrite.ca)



# Achieve Sustained Treatment Outcomes



Thank you for attending this educational program.  
We are pleased to offer you the following promotion.

## 15% off all UNDA Numbered Compounds

Use promotional code:

**UNDA20**

\*Valid until June 8, 2020



To place an order, register for an education event or any additional questions,  
please call your Atrium Innovations representative at  
1 (800) 263-5861 Canada or 1 (888) 737-6925 USA.  
You can also visit [www.Seroyal.com](http://www.Seroyal.com) or [www.Seroyal.ca](http://www.Seroyal.ca)



Thank you for your participation!

Session 3:

Wednesday, March 4, 2020

8:00-10:00PM EST - 5:00-7:00PM PST

