

# RENUAL®

#1 MOST  
RECOMMENDED

professional supplement  
brand by healthcare  
professionals<sup>1</sup>



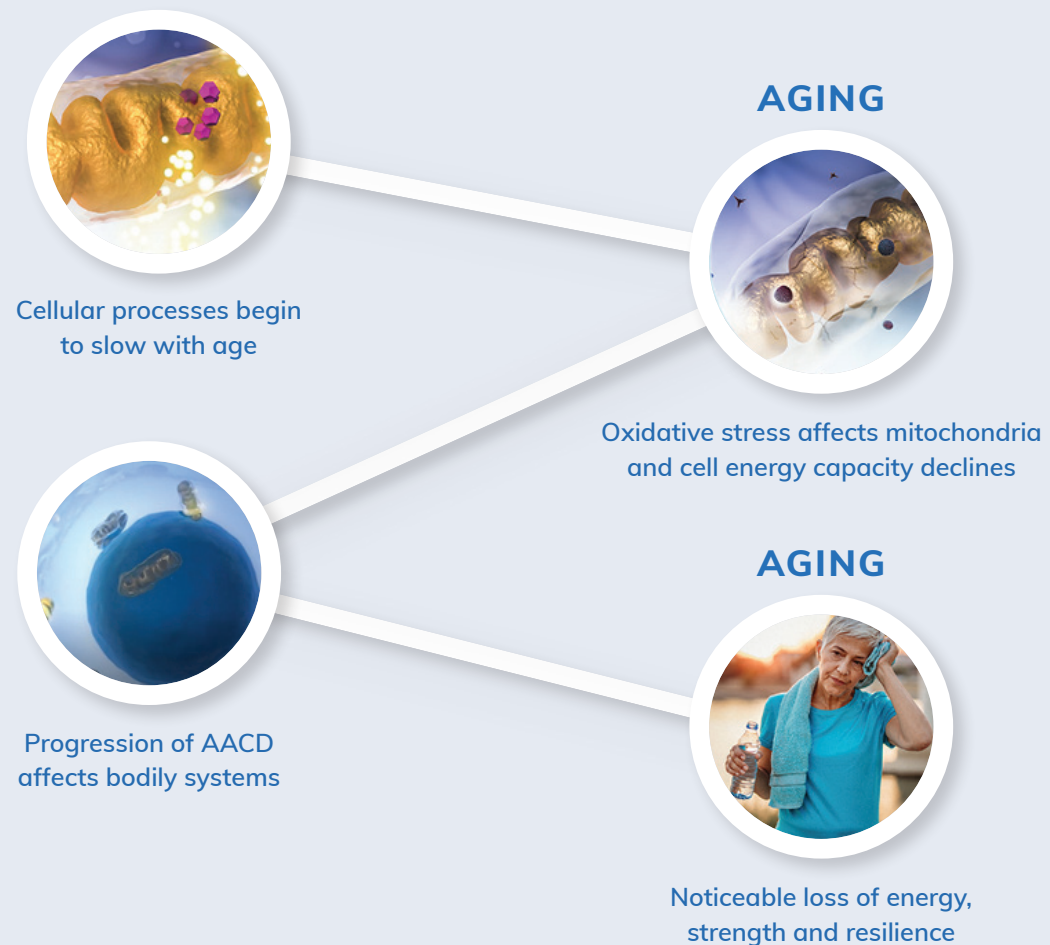
Ask your practitioner about RENUAL to **power muscle function, increase cellular energy and promote healthy aging<sup>†</sup>**

<sup>†</sup>This statement has not been evaluated by the Food & Drug Administration. This product is not intended to diagnose, treat, cure or prevent any disease.


**pure**  
encapsulations®

# WHAT IS AGE-ASSOCIATED CELLULAR DECLINE?

**Age-Associated Cellular Decline (AACD)** is the common, gradual deterioration in the way our cells function as we age, which often begins in our 40s and accelerates in our 60s.<sup>1,2</sup> While aging is a complex process involving many physical changes, recent scientific advances have brought a wealth of understanding about why we age and what changes occur at the cellular level.



## SIGNS OF AGE-ASSOCIATED CELLULAR DECLINE CAN INCLUDE:

-  Lower levels of **daily energy**
-  Decline in **strength and stamina**
-  Decreased **immune function**
-  Reduced **resilience**

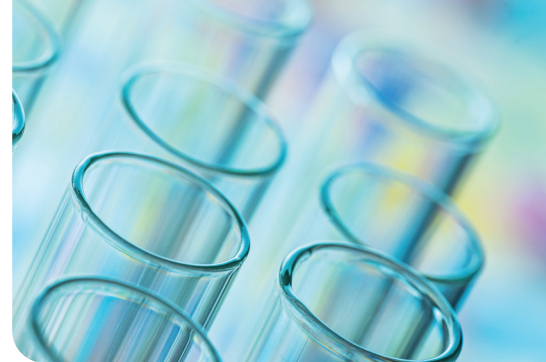
Evolving research has shown these changes are often associated with a gradual deterioration in specific natural processes deep inside our cells as we grow older. They become noticeable once they affect the performance of enough cells involved in a specific function.

For more information on AACD please visit [myaacd.org](http://myaacd.org).





## RESEARCH CONTINUES TO ENHANCE OUR UNDERSTANDING OF THE CELLULAR DECLINE THAT IS RESPONSIBLE FOR LOSS OF ENERGY, STRENGTH AND RESILIENCE AS WE AGE.



What has become increasingly evident is the importance of mitochondrial health, which determines how much energy our cells can make.<sup>3</sup>

As the “powerhouse” of the cell, **mitochondria are primarily responsible for producing cellular energy (ATP).**<sup>4</sup> As we age, however, a variety of cellular mechanisms decline and mitochondria become less efficient, which gradually impairs cellular function as we age. Current evidence points to mitochondrial dysfunction as a factor commonly driving accelerated cellular aging and AACD.<sup>5</sup>

Given the pivotal role mitochondria play in our cellular health and all organs throughout the body, the **ability to maintain mitochondrial health after middle age may help to support healthy cellular aging.** Research and new interventions that target the health of mitochondria may show significant promise for supporting cellular processes that decline with age.<sup>6</sup>



**What is Autophagy?** The natural process of cellular renewal in which the body degrades, clears and recycles cellular components.

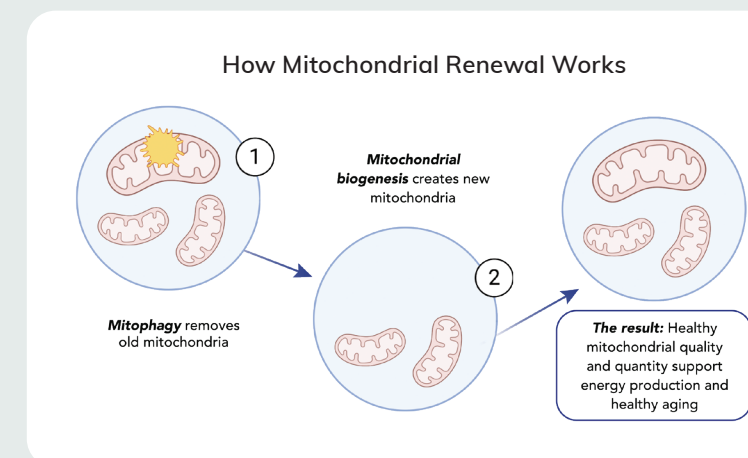
**What is Mitophagy?** Mitochondrial clearance and recycling to prevent dysfunction and cellular degeneration.

## MITOPHAGY, AUTOPHAGY AND UROLITHIN A (UA)

The life span of mitochondria is limited, in part, by frequent exposure to oxidative stress that occurs during normal energy metabolism. As they age, mitochondria produce less energy, and may even disturb normal cellular functions as they accumulate. Therefore, **a cell’s energy output and overall health depends on mitochondrial removal and replacement.** Supporting this recycling process is a newly recognized strategy for maintaining cellular health, particularly in muscles and other metabolically active tissues.<sup>7-9</sup>

### Old mitochondria are routinely destroyed through a process known as mitophagy.

The recycled parts are salvaged to create new mitochondria (a process called *mitochondrial biogenesis*). This sustainable system hums when we’re young, but grows sluggish with time, weakening muscles and driving other hallmarks of aging.<sup>10,11</sup>



In a 2016 study published in *Nature Medicine*, a first-in-class natural antioxidant compound called urolithin A (UA) effectively supported mitophagy in preclinical models.<sup>13</sup> **More recent research indicates benefits in muscle function and mitochondrial efficiency in elderly subjects after taking UA for 4 weeks.**<sup>14</sup> UA taken orally, as Mitopure™, outperforms pomegranate as shown in a trial of healthy adults whose plasma UA levels were six times higher following a single dose of Mitopure™ than the results of an 8 oz serving of pomegranate juice, one of the richest sources of these particular antioxidants.<sup>15†</sup>

†This statement has not been evaluated by the Food & Drug Administration. This product is not intended to diagnose, treat, cure or prevent any disease.

# RENUAL®

MITOCHONDRIAL RENEWAL FEATURING  
MITOPURE™ UROLITHIN A

RENUAL contains a combination of ingredients, including Mitopure™ Urolithin A, resveratrol and CoQ<sub>10</sub> to:



Power healthy  
muscle function<sup>†</sup>



Enhance mitochondrial  
renewal to support  
energy output  
and production<sup>†</sup>



Promote healthy  
aging<sup>†</sup>



## WHAT IS UROLITHIN A?

Urolithin A (UA) is derived from complex molecules called ellagitannins in pomegranates, nuts and berries. After eating these foods, bacteria in the intestine generate urolithins, which are responsible for the health benefits of pomegranates and pomegranate juice. But because of differences in bacterial populations in the intestinal tract, not everyone can generate UA after consuming these foods.<sup>12</sup>



Certified Gluten-Free by the Gluten-Free Certification Organization, [www.gluten.org](http://www.gluten.org)

<sup>†</sup>Visit [PureEncapsulationsPro.com](http://PureEncapsulationsPro.com) for more information on our GMO Policy.

<sup>†</sup>This statement has not been evaluated by the Food & Drug Administration. This product is not intended to diagnose, treat, cure or prevent any disease.

## Supplement Facts

Take 2 capsules, 1-2 times daily, with or between meals.

Serving Size: 2 Caplique® Capsules • Servings Per Container: 30

2 Caplique® Capsules Contain:

Mitopure™ Urolithin A	250 mg
Trans-Resveratrol (from Japanese knotweed ( <i>Polygonum cuspidatum</i> ) extract (root))	150 mg
Coenzyme Q <sub>10</sub>	60 mg

Other ingredients: vegetable glycerin, vegetarian capsule (cellulose, water)

**mitopure™** Mitopure™ (proprietary Urolithin A) and the Mitopure™ logo are trademarks of Amazentis SA. Patent [www.amazentis.com/patents](http://www.amazentis.com/patents)  
Kaneka Q<sub>10</sub>® is a U.S. registered trademark of Kaneka Corporation. Caplique® is a registered trademark used with permission.



RENUAL	Quantity	Order Code
	60	RNL6



Our next-generation mitochondrial support product, RENUAL, is ideal for patients who need support with **energy production, muscle function** and **healthy aging**.<sup>†</sup>



The unique liquid blend of Mitopure™ Urolithin A, CoQ<sub>10</sub>, resveratrol and vegetable glycerin can have some visual separation. Be assured, this separation is normal, and each capsule is safe and contains the right amount of healthy, active ingredients.

FOR MORE INFORMATION PLEASE VISIT  
[PureEncapsulationsPro.com/RENUAL](http://PureEncapsulationsPro.com/RENUAL)

## REFERENCES

1. Massudi H, Grant R, Braidy N, et al. *PLoS One*. 2012;7(7):e42357.
2. Jones DP, Mody VC Jr, Carlson JL, et al. *Free Radic Biol Med*. 2002 Nov 1;33(9):1290-300.
3. López-Otín C, Blasco MA, Partridge L, et al. *Cell*. 2013 Jun 6;153(6):1194-217.
4. Anderson AJ, Jackson TD, Stroud DA, Stojanovski D. *Open Biol*. 2019 Aug 30;9(8):190126.
5. Chistiakov DA, Sobenin IA, Revin VV, et al. *Biomed Res Int*. 2014;2014:238463.
6. Sun N, Youle RJ, Finkel T. *Mol Cell*. 2016 Mar 3;61(5):654-666.
7. Duchon MR. *Diabetes* 2004 Feb; 53(suppl 1): S96-S102.
8. Roberts RG. *PLoS Biol*. 2017 Mar; 15(3): e2002338.
9. Ashrafi G, Schwarz TL. *Cell Death Differ*. 2013 Jan;20(1):31-42.
10. Marzetti E, Calvani R, Cesari M, et al. *Int J Biochem Cell Biol*. 2013;45(10):2288-2301.
11. Chen G, Kroemer G, Kepp O. *Front Cell Dev Biol*. 2020;8:200.
12. Heim KC. In: *Antioxidant Polymers: Synthesis, Properties, and Applications*. Cirillo G, Iemma F, eds. Taylor and Francis, c. 2012
13. Ryu D, Mouchiroud L, Andreux PA, et al. *Nature Medicine* 22:8, 2016;879-88.
14. Andreux PA, Blanco-Bose W, Ryu D, et al. *Nature Metabolism* 1:2019;595-603.
15. Mitopure™ (Proprietary Urolithin A) Bioavailability in Healthy Adults (NOURISH). 2020. <https://clinicaltrials.gov/ct2/show/NCT04160312>

**#1 MOST  
RECOMMENDED**

professional supplement  
brand by healthcare  
professionals<sup>1</sup>

Visit [PureEncapsulationsPro.com/RENUAL](https://PureEncapsulationsPro.com/RENUAL) for more information.



800.753.2277 | [PureEncapsulationsPro.com](https://PureEncapsulationsPro.com)

Pure Encapsulations is a registered trademark.

1. Among U.S. healthcare professionals surveyed who recommend specific professional supplement brands, Nutrition Business Journal® Practitioner Survey 2016, 2020, 2023.

\*This statement has not been evaluated by the Food and Drug Administration.  
This product is not intended to diagnose, treat, cure, or prevent any disease.

**pure**  
**encapsulations**<sup>®</sup>